

Horizontal Optical Cable Junction Box OEM Manufacturer



Horizontal Optical Cable Junction Box OEM Manufacturer



Established as a division of Century Manufacturing Co., Inc. in 1990, Century Fiber Optics manufactures a complete line of passive fiber optic interconnect products for wall mount, rack mount, and OSP ...



Our LGX Chassis Fiber Optic Enclosures are made in the USA, with options including heavy gauge steel and lightweight aluminum termination boxes. These enclosures are designed to house your fiber ...



Corning has a wide variety of hardware solutions to choose from to fit your cabling needs. Choose from racks, panels, modules, splice trays, ethernet fiber switches and other structured cabling components.



We have 20 years of OEM and ODM experience. Specifically, our team can design drawings and samples for customers in one to two weeks. Moreover, we have various high-quality products ...



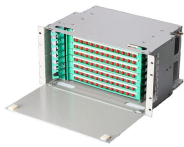
Custom manufacturer of electric and wire junctionboxes for industrial and commercial connectivity. Standard enclosures measure 2 x 3 x 2.5 in. and hold up to three conductors, while ...



It is suitable for straight-through and branch connections of various structural optical cables in overhead, pipeline, direct burial and other laying methods.



Integrated junction box consisting of cable glands and a terminal block. Suitable for industrial facilities, power cable joint, relay between motors and/or sensors.



Looking for reliable FTTH solutions? JUNPU offers factory-direct EDFA, WDM, Fiber Optic Boxes, and Splice Closures. 13+ years of OEM/ODM experience. Certified ...



Utilizing cutting-edge technology and the finest materials, Vertical Cable ensures reliable and stable connections every time. Vertical Cable manufactures CAT6 and CAT6A CMP cables at its plant in ...



Looking for reliable FTTH solutions? JUNPU offers factory-direct EDFA, WDM, Fiber Optic Boxes, and Splice Closures. 13+ years of OEM/ODM experience. Certified quality, global shipping. Explore our ...

Contact Us

For more information, pricing, or custom network solutions, please contact us:

Website: <https://www.hashherbcafe.co.za>

Email: hello@hashherbcafe.co.za

Phone: +27 63 814 7295

Address: 15 Galaxy Road, Linbro Business Park, Johannesburg, 2065, South Africa

This document is for informational purposes only. Specifications subject to change without notice.

