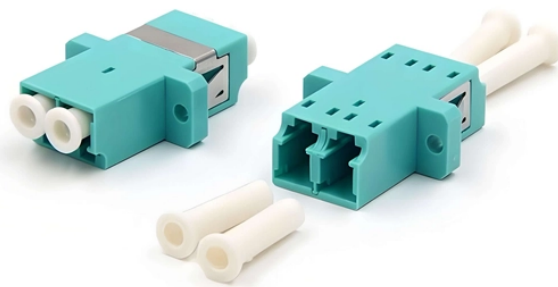


# **Hongyuan High Voltage Fireproof Cable Tray**



## Hongyuan High Voltage Fireproof Cable Tray



It is widely used in various types of cable laying scenarios, such as electricity, transportation, communication, telecommunications and other fields. It can effectively reduce laying costs and ...



Fireproof Cable Tray is a reliable and durable cable management solution that provides superior fire resistance and noise reduction. It is made of high-quality materials that are highly resistant to heat ...



Our Fireproof Cable Tray is made of high-strength metal material and is coated with silver color. It is designed to resist high voltage and has a Grade A fireproof rating.



We supply 50+ types of cable trays—fire-resistant, corrosion-resistant, aluminum, stainless steel—all certified and adaptable to various industries and regions.



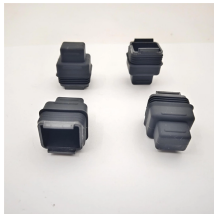
Widely deployed in high-safety environments including commercial buildings, industrial facilities, and power stations, this Fireproof Cable Tray is essential for linking Cable Tray assemblies, Transformer ...



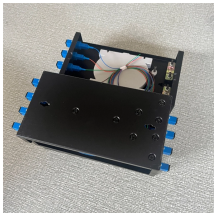
It is widely used in various types of cable laying scenarios, such as electricity, ...



The fireproof cable tray features a steel outer shell, double-layer fireproof covers, and an internal inorganic fireproof trough box. The average thickness of the insulation layer is 25mm.



Fire Rated Cable Trays are built to boost flame retardancy while fitting into tight ceiling spaces. Offering a sleek, clean finish for indoor or outdoor use, it provides value with a 78mm depth that ensures ...



Shop high-quality fire proof cable trays for industrial and commercial use. Durable, powder-coated, and perforated for optimal ventilation and safety.



Fireproof Cable Tray is a great choice for high-load applications in industrial and commercial buildings. It is made of high-quality galvanized steel to ensure superior heat resistance and fire strength, making ...



The fireproof bridge is mainly composed of a fireproof board made of glass fiber reinforced materials and inorganic adhesives, a metal frame and other fireproof substrates.

## Contact Us

For more information, pricing, or custom network solutions, please contact us:

Website: <https://www.hashherbcafe.co.za>

Email: [hello@hashherbcafe.co.za](mailto:hello@hashherbcafe.co.za)

Phone: +27 63 814 7295

Address: 15 Galaxy Road, Linbro Business Park, Johannesburg, 2065, South Africa

This document is for informational purposes only. Specifications subject to change without notice.

