

High-speed optical cable design and deployment requirements



Overview

Properly designed fiber optic cables ensure maximum transmission performance and network reliability. Critical design factors include pulling strength limits, bend radius guidelines, water protection, and fire rating compliance, among others. These are categorized into technical, safety, and regulatory standards, each vital for. The Fiber Optic Association, Inc. (FOA) was founded in 1995 to help develop the workforce to build the fiber optic networks to support a rapid expansion in communications and the Internet. The charter of the FOA was to promote professionalism in fiber optics through education, certification, and. In this broad guide, we will run through why, what, and how of Fiber optic network design and deployment — covering planning, challenges, best practices, and key decisions that drive success. Effective governance and strategic business modeling are. Among the most widely deployed form factors are SFP, SFP+, SFP28, QSFP+, and QSFP28, which together support Ethernet speeds ranging from 1Gbps to 100Gbps.

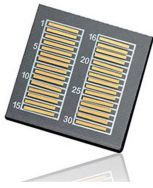
High-speed optical cable design and deployment requirements



This comprehensive guide first introduce MTP®/MPO cable, then breaks down MTP®/MPO cable types by cable structure, fiber count, fiber polarity, OS2 and OM54/3 cable modes, ...



high implies marked extension upward and is applied chiefly to things which rise from a base or foundation or are placed at a conspicuous height above a lower level.



High (adjective, informal): Intoxicated by drugs or alcohol. The word "high" is a versatile term with multiple meanings and applications, spanning physical elevation, emotional states, and ...



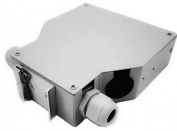
High Fiber Count Cables: High fiber count cables are flexible ribbon cables which generally have 864 fibers, 1728 fibers, 3456 fibers or up to 6912 fibers. These cables are not designed for pulling but are ...



HIGH definition: having a great or considerable extent or reach upward or vertically; lofty; tall. See examples of high used in a sentence.



High definition: Far or farther from a reference point.



Learn the different fiber optic cable installation requirements with our expert guide to ensure optimal performance and durability in your network.



These standards guide the design, deployment, and operation of fiber optic systems, ensuring their viability and robustness on a global scale. Countries around the world have developed ...



Fiber network deployment involves complex planning, precise execution, and seamless activation to meet growing digital demands. This guide highlights essential strategies and tools to ensure ...



Fiber optic network design refers to the specialized processes leading to a successful installation and operation of a fiber optic network.



If something is high, it is a long way above the ground, above sea level, or above a person or thing. I looked down from the high window. The bridge was high, jacked up on wooden piers. The sun was ...



Fiber optic professionals need to follow a combination of technical standards (like TIA/EIA and ITU-T), safety regulations (like NEC and OSHA), and operational guidelines (like ISO/IEC) to ...



Selecting the appropriate form factor can help organizations build networks that meet current bandwidth demands while remaining adaptable for future expansion. This guide explains the key characteristics, ...



Discover how to design & deploy Fiber optic networks for modern telecom. Learn planning, budgeting, documentation, and best practices for success.



Definition of high adjective in Oxford Advanced American Dictionary. Meaning, pronunciation, picture, example sentences, grammar, usage notes, synonyms and more.



high adjective (IMPORTANT) B2 having power, an important position, or great influence: an officer of high rank



Properly designed fiber optic cables ensure maximum transmission performance and network reliability. Critical design factors include pulling strength limits, bend radius guidelines, water ...

Contact Us

For more information, pricing, or custom network solutions, please contact us:

Website: <https://www.hashherbcafe.co.za>

Email: hello@hashherbcafe.co.za

Phone: +27 63 814 7295

Address: 15 Galaxy Road, Linbro Business Park, Johannesburg, 2065, South Africa

This document is for informational purposes only. Specifications subject to change without notice.

