

## High-density fiber optic cable laying stand upgraded version available now



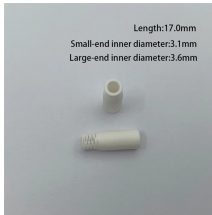
## High-density fiber optic cable laying stand upgraded version available



Fiber Rear Cable Management Tray, 1RU, for PHDHDJ panels when using HDFM or LMH cassettes. Management spools and mounting hardware included.



Designed for fast, easy deployment of high-density interconnects and cross-connects in Data Centers and LANs, the FiberExpress UHD (FX UHD) System provides superior port access and protection, ...



U-Teck Workstation with Cable Management Bracket (Includes Floor Stand and 2 Stand-Off Props with Adjustable Webbing)



Choose from fiber optic enclosures, patch panel enclosures, cable strain relief mounting kits, fiber optic closet connector housings, fiber distribution enclosures, and fiber optic splice tray enclosures. These ...



The ultimate in cable management versatility, this Fiber Cable Manager allows you to route cables from the front to the back of your cabinet with seven routing slots and five 3" x 1.75" D-rings.



The Norden High Density Floor Standing Fibre Optic Distribution Frame is a durable and versatile solution designed for efficient fibre management in high-demand environments.



Wholesale Heavy Duty De-reeling Stand Roller Fiber-optic Cable Laying Drum Jack New Cable Laying Drum Jack Used Cable Laying. Standard packing, 430\*320\*150mm, 6.0 kgs, half-year warranty. | ...



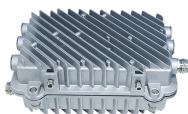
Fiber optic cabinet is a high-capacity, high-density fiber distribution frame, suitable for the composition and distribution of fibers in optical access network to achieve the fiber optic lines ...



U-Teck Workstation with Cable Management Bracket (Includes Floor Stand and 2 Stand-Off Props with Adjustable Webbing)



Corning has a wide variety of hardware solutions to choose from to fit your cabling needs. Choose from racks, panels, modules, splice trays, ethernet fiber switches and other structured cabling components.



The PHENIX fibersect Folding Stand is designed to orient the fibersect for easy insertion of fiber optic connectors attached to the ends of cables suspended over the workbench.

## Contact Us

For more information, pricing, or custom network solutions, please contact us:

Website: <https://www.hashherbcafe.co.za>

Email: [hello@hashherbcafe.co.za](mailto:hello@hashherbcafe.co.za)

Phone: +27 63 814 7295

Address: 15 Galaxy Road, Linbro Business Park, Johannesburg, 2065, South Africa

This document is for informational purposes only. Specifications subject to change without notice.

