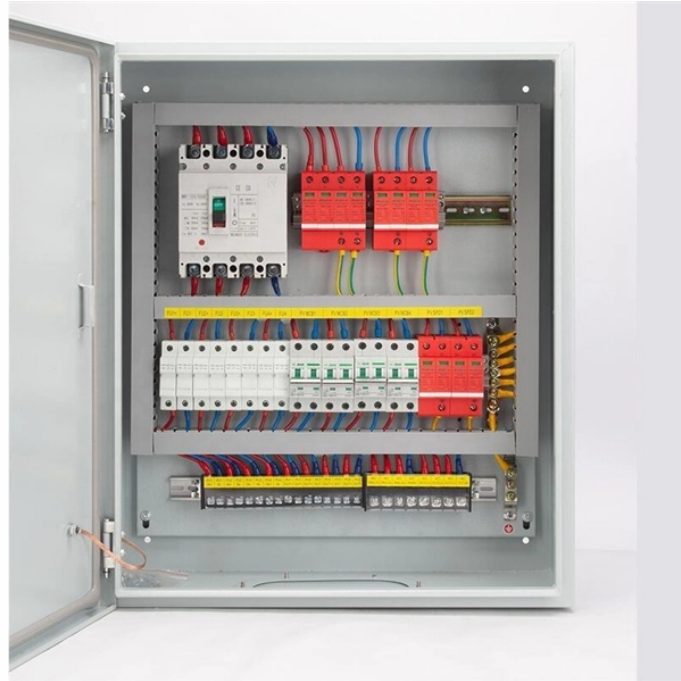


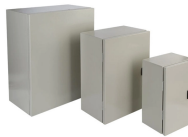
## Heavy-duty ground cable trays



## Heavy-duty ground cable trays



Heavy duty cable trays and cable ladders are manufactured from pre-galvanized or hot-dipped galvanized sheet metal, designed to meet ideal environmental working conditions for indoor and ...



Match the cable tray system to the environment: solid for full protection, perforated for ventilation, and ladder for heavy-duty long spans. Define tray width and side height by cable quantity, bending radius, ...



Discover the benefits, applications, & selection tips for heavy duty cable tray. Enhance safety and efficiency with robust cable management.



BURNDY® offers mechanical grounding connectors like Cables to ground, cables to Flat/Bar, Static, cable tray & Lay in clamps, fence grounding. Know more.



Refers to the approximate height of a cable tray used for specifying. Selecting a specific height will show cable trays with that height, as well as cable tray accessories compatible with that height.



There are a large number of cable tray fittings that are made compatible with each type of tray. These fittings help in maintaining support of the cable tray system. Shop Graybar's collection of cable tray ...



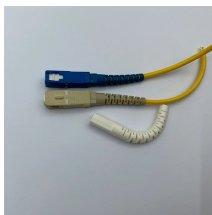
Heavy duty cable trays and cable ladders are manufactured from pre-galvanized, electro-galvanized, or hot-dipped galvanized sheet metal, designed to meet ideal environmental working conditions for ...



SILTEC cable trays, heavy duty type, feature a reinforced construction with zigzag wires down the sides and double wires on the sides and at the bottom, providing these trays with a very high load capacity.



Choose from our selection of cable trays, including over 850 products in a wide range of styles and sizes. Same and Next Day Delivery.



Over the past 55+ years, MP Husky US Cable Tray has engineered and manufactured the most reliable, highest quality, cost effective and innovative cable trays systems available.

## Contact Us

For more information, pricing, or custom network solutions, please contact us:

Website: <https://www.hashherbcafe.co.za>

Email: [hello@hashherbcafe.co.za](mailto:hello@hashherbcafe.co.za)

Phone: +27 63 814 7295

Address: 15 Galaxy Road, Linbro Business Park, Johannesburg, 2065, South Africa

This document is for informational purposes only. Specifications subject to change without notice.

