

Grounding specifications and models of distribution boxes



Overview

26 mm² (10 AWG) ground wire must be used, and in all other markets a 6 mm² must be used. On the US market, a 5. Today, we're diving deep into the world of distribution box grounding, breaking down the standards, and shining a light on those sneaky mistakes that even experienced electricians sometimes make. Whether you're a seasoned pro or just starting out, this comprehensive guide will give you practical. Power from factory ground must be installed by a qualified electrician. Each DISTRIBUTION BOX and controller must be grounded. Grounding of the units: Attach a ground wire from one of. IPMENT, STRUCTURES, ETC. IN ELECTRICAL STATIONS INCLUDING TRANSMISSION AND DISTRIBUTION SUBSTAT GR THAN 8 FT FROM THE FENCE. THE FENCE SHALL BE GROUNDED SEPARATELY FROM THE GRID UNLESS OTHERWISE NOTED ON THE A PROPRIATE PROJECT DRAWING. SEE APPLICATION. Vista Underground Distribution Switchgear features load-interrupter switches for switching 600- or 900-ampere main feeders and microprocessor-controlled arc-spinners or vacuum fault interrupters for switching and protection of 600- or 900-ampere main feeders and 200-, 600-, or 900-ampere taps. Where continuity of service is a high priority, high-

resistance grounding can add the safety of a grounded system while minimizing the risk of service interruptions due to grounds.

Grounding specifications and models of distribution boxes



In this workshop, we will demystify the concepts of grounding as applicable to utility networks and industrial plant distribution systems as well as their associated control equipment.



Ensure good grounding and earthing practices to protect people and equipment from electrical faults. Regularly inspect and maintain your distribution box to catch issues early and ensure ...



Each Power Circuit Breaker or Power Transformer having a bushing Voltage Transformer on the tank shall have the Voltage Transformer provided with a separate ground lead, independent of the ...



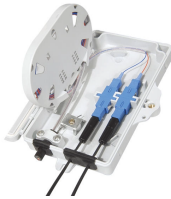
Any borings and sub-surface data including ground water elevations, underground utility and structural locations that may be furnished or indicated on the plans are presented only as information that is ...



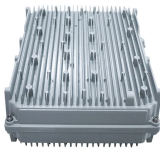
Good equipment grounding ensures personnel safety. Neutral grounding, the system frequency and soil resistivity impact modeling of the distribution system components.



Each DISTRIBUTION BOX and controller must be grounded. On the US market, a 5.26 mm² (10 AWG) ground wire must be used, and in all other markets a 6 mm² must be used.



Ground rods are the most common grounding electrode found on distribution circuits. Driving ground rods often requires a mark-out survey to ensure that the driven rods will not contact existing ...



Whether you're a seasoned pro or just starting out, this comprehensive guide will give you practical insights into proper grounding techniques, with a special focus on how selecting quality materials ...



The fault interrupter ground switch has the ability to close the designated number of times against a three-phase fault equal to the rated value with the ground switch remaining operable and able to ...



Good system grounding provides the path for normal load and fault currents while maintaining load and controls temporary overvoltages. Good equipment grounding ensures ...



Ensure good grounding and earthing practices to protect people and equipment from electrical faults. Regularly inspect and maintain your distribution ...



Where continuity of service is a high priority, high-resistance grounding can add the safety of a grounded system while minimizing the risk of service interruptions due to grounds.

Contact Us

For more information, pricing, or custom network solutions, please contact us:

Website: <https://www.hashherbcafe.co.za>

Email: hello@hashherbcafe.co.za

Phone: +27 63 814 7295

Address: 15 Galaxy Road, Linbro Business Park, Johannesburg, 2065, South Africa

This document is for informational purposes only. Specifications subject to change without notice.

