


# Grounding resistance requirements for temporary distribution boxes

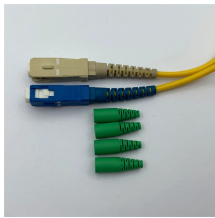



## Overview


26 mm<sup>2</sup> (10 AWG) ground wire must be used, and in all other markets a 6 mm<sup>2</sup> must be used. On the US market, a 5. Distribution boxes shall be provided with a disconnecting device for each branch circuit. Such disconnecting devices shall be equipped or designed in such a manner that it can be determined by visual observation when such a device is open and that the circuit is deenergized, the distribution box. Whether you need an industrial portable power station, a complete jobsite power station, or help managing temporary wiring and distribution, this will help you stay compliant with all the necessary requirements. Building a DIY TPDB allows for customization to specific power needs while ensuring safety standards are met. This paper will also. Whether you're a seasoned pro or just starting out, this comprehensive guide will give you practical insights into proper grounding techniques, with a special focus on how selecting quality materials from a reliable building material supplier impacts your entire system's safety and longevity.


## Grounding resistance requirements for temporary distribution boxes

	<p>NUNUNU is a cool contemporary yet comfortable alternative to traditional kids fashion for newborns, toddlers, babies up to 24m and for boys and girls up to 14Y.</p>
---	---

	<p>25 ohms with one coil or one rod. In rocky or sandy soil where experience indicates ground resistance may exceed 25 ohms, install additional coil or rods</p>
---	--

	<p>Jobcase</p>
--	----------------

	<p>Notifications You must be signed in to change notification settings Fork 0</p>
---	---

	<p>Stay updated with the latest news and stories from around the world on Google News.</p>
---	--



Lightning arrestors shall be connected to a low resistance grounding medium on the surface and shall be separated from neutral grounds by a distance of not less than 25 feet.



you, the, i, to, a, and, it, of, that, in, is, me, what, this, for, m y, on, your, we, have, do, no, don't, are, be, i'm, not, was, he, it's, know, with, all, but, here, get, so, just, go, like, up ,right ...



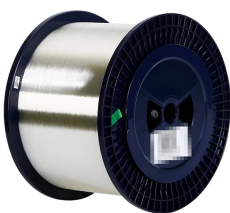
Congratulations mama ☐ Nomfundo S'thole Life has a way of testing you right before something beautiful happens . Sometimes you're pushed to your breaking point not because you're weak, but...



The Creative Soccer Culture Brief Sign up to our newsletter and we'll keep you in the loop with everything good going on in the world of Creative Soccer Culture.



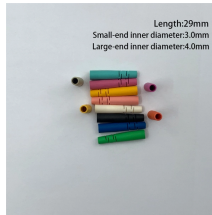
Improper grounding is one of the top causes of electrical accidents on job sites. It's absolutely vital to remain compliant with both NEC and OSHA requirements when it comes to ...



Critical Safety and Grounding Requirements Electrical safety in temporary setups revolves around proper grounding, bonding, and ground-fault protection. Grounding provides a physical ...



All 120-volt, single-phase, 15- and 20-ampere receptacles shall be of the grounding type and their contacts shall be grounded by connection to the equipment grounding conductor of the circuit ...



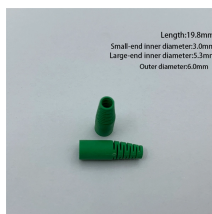
Dear Twitpic Community - thank you for all the wonderful photos you have taken over the years. We have now placed Twitpic in an archived state. For more information ...



This paper using simple terms and examples will discuss the grounding and bonding system as it relates to both permanent and temporary electrical system installations, specific ...



Whether you're a seasoned pro or just starting out, this comprehensive guide will give you practical insights into proper grounding techniques, with a special focus on how selecting quality materials ...



Each DISTRIBUTION BOX and controller must be grounded. On the US market, a 5.26 mm 2 (10 AWG) ground wire must be used, and in all other markets a 6 mm 2 must be used.



The earthing or grounding system involves connecting the metallic components of electric machinery and devices to an earth plate (ground rod) or earth electrode via an earth lead (grounding conductor) ...



Where continuity of service is a high priority, high-resistance grounding can add the safety of a grounded system while minimizing the risk of service interruptions due to grounds.



Paragraph 96; Ground Resistance Requirements:  
“Grounding systems shall be designed to minimize hazard to personnel and shall have resistances to ground low enough to per-mit prompt operation of ...

## Contact Us

For more information, pricing, or custom network solutions, please contact us:

Website: <https://www.hashherbcafe.co.za>

Email: [hello@hashherbcafe.co.za](mailto:hello@hashherbcafe.co.za)

Phone: +27 63 814 7295

Address: 15 Galaxy Road, Linbro Business Park, Johannesburg, 2065, South Africa

This document is for informational purposes only. Specifications subject to change without notice.

