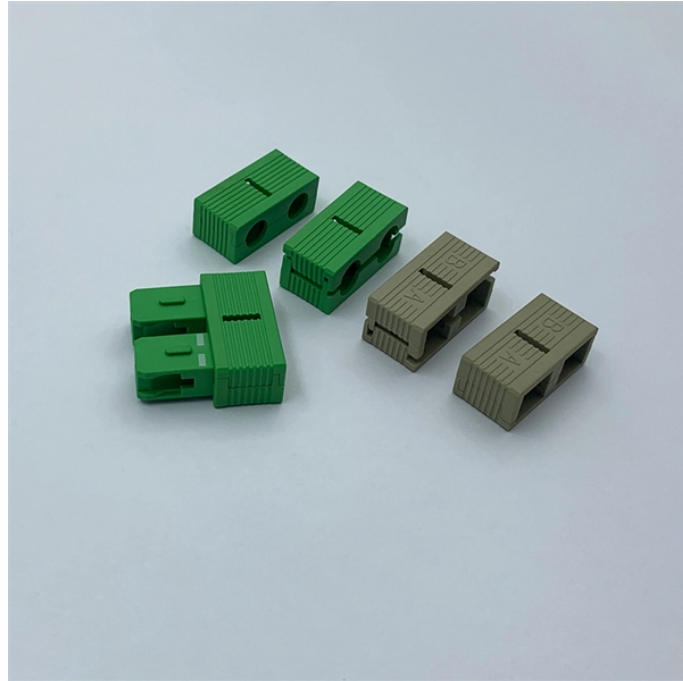


Greece Two-Optics 16-Electronic Switch



Greece Two-Optics 16-Electronic Switch



The SC216D-000058 2x16 Optical Switch is a fiber optic switch designed for high-performance optical signal routing. It features 2 input channels and 16 output channels, utilizing ...



This novel design significantly reduces moving part position sensitivity, offering unprecedented high stability as well as an unmatched low cost.



The Fiberer's 8x8 fiber optic switch is a very fast opto-mechanical switch array based on the MEMS technology. They are composed of an optical subsystem and an electrical driver interface. The switch ...



Flexible stacking board to board connectors in a variety of orientations such as low profile, elevated, right-angle and pass-through, with a choice of pitch from 1.27 ...



Optical Switches are available at Mouser Electronics. Mouser offers inventory, pricing, & datasheets for Optical Switches.



Switches and sockets can make all the difference to a home or commercial environment, whether installed as part of a whole house renovation or simply



Flexible stacking board to board connectors in a variety of orientations such as low profile, elevated, right-angle and pass-through, with a choice of pitch from 1.27 mm to 2.54 mm, to fit any application.



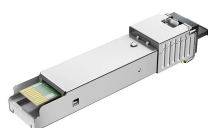
Mouser is an authorized distributor for many optical switch manufacturers including Broadcom, Omron, onsemi, Sharp Micro, TT Electronics, Vishay & more. Please view our large selection of optical ...



We provide a full line of EtherXtra multi-channel Ethernet over coax (EoC) and Ethernet over UTP (Cat5) extenders, PoE media converters, IGMP multicasting industrial Ethernet switches for IP video ...



2x2 Cross/Bar Switches (4 Fibers) OSW-D2x2 switch is a cross-bar switch. It has four by four (4x4) ports, which consist of two groups ...



Switches are available at Mouser Electronics. Mouser offers inventory, pricing, & datasheets for Switches.

Contact Us

For more information, pricing, or custom network solutions, please contact us:

Website: <https://www.hashherbcafe.co.za>

Email: hello@hashherbcafe.co.za

Phone: +27 63 814 7295

Address: 15 Galaxy Road, Linbro Business Park, Johannesburg, 2065, South Africa

This document is for informational purposes only. Specifications subject to change without notice.

