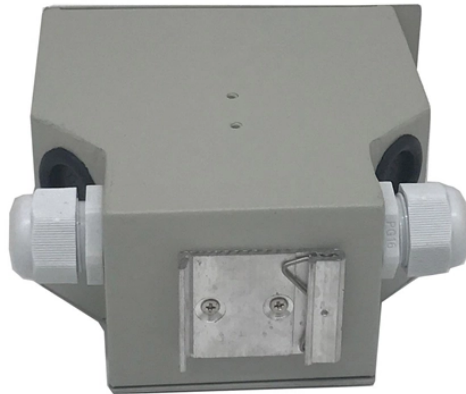


General-type distribution network automation terminal



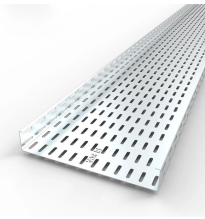
Overview

This page is a practical guide for designing feeder automation terminals (FTU, DTU and TTU) with the right mix of sensing, communication, power, security and IC choices. It helps map real grid scenarios into a robust architecture, a realistic checklist and brand-ready component. ● Other distribution automation applications such as Direct Transfer Trip. The guide also provides details on the system's overall structure, different ways it can be deployed, specific deployment instructions, recommended best practices, and potential challenges you might face during. Eaton's SMPTM4/DP automation platform is a powerful and rugged platform, providing utilities with secure and reliable data acquisition and management. Feeder. The CKPM602 Distribution Automation Terminal (hereinafter referred to as DTU) is suitable for distribution networks with voltage levels of 10kV and above.

General-type distribution network automation terminal



Distribution automation terminals are usually divided into three types: Feeder Terminal Unit (FTU), switching station remote terminal DTU and distribution transformer remote terminal ...



Distribution network automation terminal, Xinerde Technology Co., Ltd. Main: high and low voltage electrical components, electrical equipment, electronic components, computer software, machinery, ...



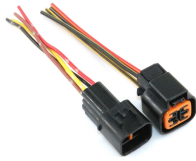
The main purpose of assembling automation terminals in the distribution network is to reduce the power outage time caused by permanent faults, reduce power outa



The GRT-D6000 station-type distribution network automation terminal (DTU) supports multi-serial ports, multiple Ethernet ports, multiple network segments, network switches, GPRS communication, ...



This page is a practical guide for designing feeder automation terminals (FTU, DTU and TTU) with the right mix of sensing, communication, power, security and IC choices. It helps map real grid scenarios ...



Cisco's Distribution Automation solution uses advanced key generation and exchange mechanisms for both link layer and network layer encryptions, simplifying key management and ...



Installed directly in protective relay enclosures or in the switchyard, this SMP Gateway provides essential communication and data concentration features. It has also been designed to operate over ...



The most flexible protection and control device for distribution • Three independent fiber or copper Ethernet ports for simultaneous/ feeder applications dedicated network connections with advanced 1 ...



The GRT-D6000 station-type distribution network automation terminal (DTU) supports multi-serial ports, multiple Ethernet ports, multiple network segments, ...



The CKPM602 Distribution Automation Terminal (hereinafter referred to as DTU) is suitable for distribution networks with voltage levels of 10kV and above. It can be applied to distribution ...



It is a new generation of microcomputer-based distribution automation remote terminal devices that integrates telemetry, telesignaling, remote control, protection, and communication functions.

Contact Us

For more information, pricing, or custom network solutions, please contact us:

Website: <https://www.hashherbcafe.co.za>

Email: hello@hashherbcafe.co.za

Phone: +27 63 814 7295

Address: 15 Galaxy Road, Linbro Business Park, Johannesburg, 2065, South Africa

This document is for informational purposes only. Specifications subject to change without notice.

