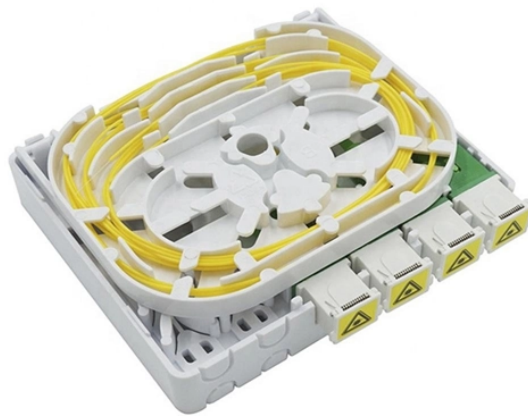


Gateway Behavior Management Core Switch



Overview

1 as the gateway for all layer-2 switches. As I said before, you also need to create a an SVI on the core with IP address 172. 1 HTHValid license from Hewlett Packard Enterprise required for possession, use, or copying. 212, Commercial Computer Software, Computer Software Documentation, and Technical Data for Commercial Items are licensed to the U. Government under vendor's standard. Guest Wi-Fi: The SSID is guest, Portal authentication is configured, the built-in Portal server is used, and the Portal page can be customized. IP addresses are allocated to terminals through DHCP. If you select All Products instead of SME Network in the upper left corner, the system prompts you to select the product to be deployed when you tap +. Step 2 Enter the deployment confirmation phase. Both approaches have pros and cons. Today my current firewall/router on a stick model is. If your network consists of several internal routable subnets and the devices/systems on those subnets communicate regularly and do not warrant being separated by firewalls, the gateway being set to the core, or whatever handles your internal routing, makes sense.

Gateway Behavior Management Core Switch



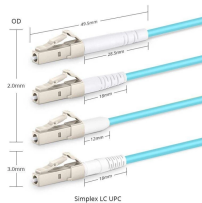
Dmz gateways on the active/passive firewall pair, and core network gateways on the nexus 9310s. It means traffic to/from core to dmz, and dmz to/from wan, is firewalled same as all gateways on ...



The user VLANs either terminate on the core switching layer or a dedicated aggregation switching layer that is also the default Gateway for the Gateway management and user VLANs.



In addition, the core switch functions as the user gateway. With the wizard-based network configuration function, the interconnection subnet, interconnection VLAN, and route between the core switch and ...



Solved: I have a Layer 3 core switch (backbone) 10.18.16.0/24, and the core switch needs to connect to multiple Layer 2 sub switches. The Layer 2 sub switches will connect to multiple ...



I am unable to set the ASA as the default gateway on the core switches as they are on a different range. I normally point my edge switches to the core stack as the gateway and use the ...



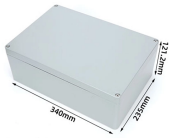
It is intended for administrators responsible for installing, configuring, and managing Aruba switches on a network. Updates to this document can occur after initial publication. For the latest versions of ...



The switch uses this port-based VLAN to run certain features and management functions, including DHCP/Bootp responses for switch management. In the default configuration, the Default VLAN is ...



Add interfaces for connecting the access switches and core switch to VLANs. The following uses the interface connecting access switch 2 and the core switch as an example.



If your network consists of several internal routable subnets and the devices/systems on those subnets communicate regularly and do not warrant being separated by firewalls, the gateway ...



To maintain network stability and prevent loops, follow these best practices: Centralized Switching: Avoid overutilizing the built-in switch ports on your UniFi Gateway. Instead, use one UniFi switch as ...



Both VSX switches are connected through the Inter Switch Link. The ISL is typically a standard LAG (Link Aggregation) of two to eight physical links. The ISL physical ports must be directly connected ...

Contact Us

For more information, pricing, or custom network solutions, please contact us:

Website: <https://www.hashherbcafe.co.za>

Email: hello@hashherbcafe.co.za

Phone: +27 63 814 7295

Address: 15 Galaxy Road, Linbro Business Park, Johannesburg, 2065, South Africa

This document is for informational purposes only. Specifications subject to change without notice.

