

Galvanized cable tray material



Galvanized cable tray material



Constructed of different materials such as galvanized iron (GI), stainless steel, or hot dip galvanized steel, perforated cable trays are strong and corrosion-resistant.



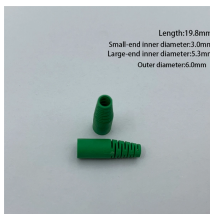
Choose from our selection of cable trays, including over 850 products in a wide range of styles and sizes. Same and Next Day Delivery.



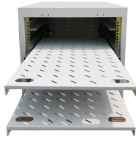
Maximize durability and safety with our professional buyer's guide. Learn how to select the right galvanized cable trays for industrial environments, ensuring long-term corrosion resistance.



In designing supports for a cable tray system, consideration should be given to the loads associated with future cable additions and any additional loading that may be applied to the cable tray system (e.g., ...



Learn the main types of galvanized cable trays, including HDG cable tray, GI cable tray and Pre-galvanized cable tray.



Heavy duty cable trays and cable ladders are manufactured from pre-galvanized, electro-galvanized, or hot-dipped galvanized sheet metal, designed to meet ideal environmental working conditions for ...



Atkore Trof is a prefabricated mill-galvanized steel structure consisting of ventilated or solid bottoms, welded to the side rails, and is manufactured and tested to NEMA Standard VE-1



Galvanized Steel Cable Trays: These trays are coated with zinc to provide enhanced corrosion resistance, making them ideal for both indoor and outdoor applications.



Steel Cable Tray Steel Cable Tray systems are Certified CSA Cable Tray, UL listed, and NEMA certified and are available in the following material types 316 Stainless Steel Cable Tray, 304 Stainless Steel ...



At its core, a galvanized cable tray is a steel-based cable support system that has been coated with zinc to protect against rust and oxidation. This protective layer makes the tray far more ...

Contact Us

For more information, pricing, or custom network solutions, please contact us:

Website: <https://www.hashherbcafe.co.za>

Email: hello@hashherbcafe.co.za

Phone: +27 63 814 7295

Address: 15 Galaxy Road, Linbro Business Park, Johannesburg, 2065, South Africa

This document is for informational purposes only. Specifications subject to change without notice.

