

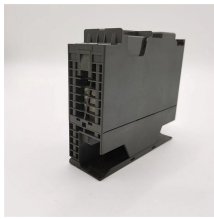
GQI Distribution Box Identification



GQI Distribution Box Identification



Distribution boxes are a great way to increase flexibility and cut costs. They lower your labor costs by reducing installation and troubleshooting time. They take up less space than loose wires, look neater ...



In this guide, we'll break down the 12 main types of distribution boxes in a way that's easy to understand. We'll chat about what each one does, where it shines, and then dive into how to choose the perfect ...



To preclude difficulties in preparing response messages, the interrogation message should be limited to no more than 40 mcode Interrogations. The interrogation message will be addressed to the DSDC ...



Understand your distribution box labels to identify circuits, improve safety, and troubleshoot electrical issues in your home with confidence.



This document provides information on the GQI protocol support provided by the Cisco cBR-8 series routers. It also explains how to manage the Announce Event Messages generated as part of the GQI ...



This command shows a summary of the video databases for a single LED, where you can find information on each database name and ID, tables name and ID within a database, and key ID for ...



This document provides information on the GQI protocol support provided by the Cisco cBR-8 series routers. It also explains how to manage the Announce Event Messages generated as ...



Two provided with box. One set provided with box. Dimensions are shown in mm (in.). (1) Replace x with 1 [1 m (3.28 ft)], 2 [2 m (6.56 ft)], 3 [3 m (9.84 ft)], 5 [5 m (16.40 ft)], or 10 [10 m (32.81 ft)] for standard ...



Video: How to locate catalog number, series number, and date code on QO and Homeline load centers. On the outside Carton Label of the box, which is located at one of the ends of ...



The distribution board(s) are configured with jumpers for either the TWI or RS-422 interface. The proper interface connector(s) to the controller is provided based on the model number of the Universal D-Box.

Contact Us

For more information, pricing, or custom network solutions, please contact us:

Website: <https://www.hashherbcafe.co.za>

Email: hello@hashherbcafe.co.za

Phone: +27 63 814 7295

Address: 15 Galaxy Road, Linbro Business Park, Johannesburg, 2065, South Africa

This document is for informational purposes only. Specifications subject to change without notice.

