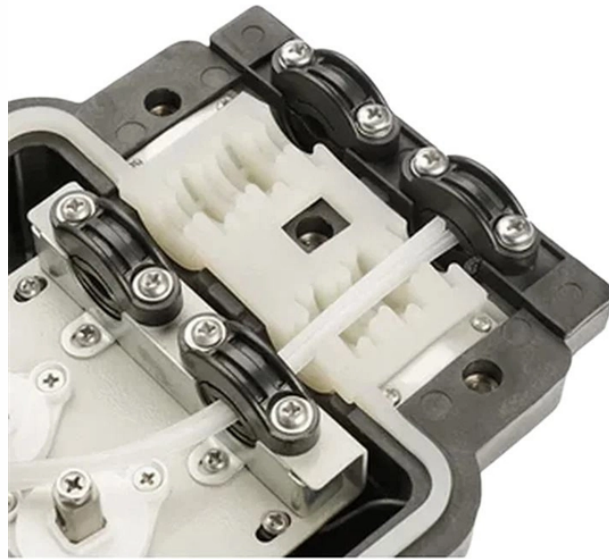


Functions of Single-mode Single-fiber Optic Fiber



Overview

Single-Mode Fiber (SMF) is engineered with an extremely narrow core, typically 8 to 10 micrometers in diameter. This physical constraint restricts the light to a single propagation path or mode. In fiber-optic communication, a single-mode optical fiber, also known as fundamental- or mono-mode, is an optical fiber designed to carry only a single mode of light - the transverse mode. Modes are the possible solutions of the Helmholtz equation for waves, which is obtained by combining. Optical fibers are among the most transformative technologies in modern photonics, quietly enabling the global internet, precision sensing, minimally invasive medicine, and high-power industrial laser systems. Glass or plastic are often used to make these fibers. Metal wires are used in optical fibers because they protect against damage and are immune to electromagnetic interference.

Functions of Single-mode Single-fiber Optic Fiber



Single-mode fiber guides light through a solitary, thin channel, reducing signal attenuation and interference. This design is critical for telecommunications, internet backbones, and ...



Single mode optical fiber is a type of fiber optic cable specifically designed to transmit a single ray or mode of light, making it ideal for long-distance, high-bandwidth data transmission ...



Single mode fiber uses a small core to transmit one light path, enabling high-speed, long-distance data with minimal signal loss and low dispersion.



Understanding the differences between single-mode, multimode, and specialty optical fibers, along with their manufacturing constraints and emerging applications, is essential for ...



Single-mode fiber guides light through a solitary, thin channel, reducing signal attenuation and interference. This design is critical for ...



Single-mode fused silica fibers are often adopted because they are free of mode loss and allow long-haul propagation of light signal, facilitating monitoring of large-scale infrastructure.



What Is Single-Mode Fiber Optic Cable? Single-mode fiber optic cable (SMF) is a type of optical fiber designed to carry a single ray of light mode directly down the fiber core.



Single mode fiber (SMF) is a type of fiber optic cable that only allows one light mode to transmit at a time. Generally, single mode cable has a narrow core diameter of 8 to 10µm ...



Single-mode fiber allows only one transmission mode. It can transmit higher bandwidth than multimode fiber but requires a light source with a limited spectral range. The terms single-mode ...



Single-Mode Fiber (SMF) is engineered with an extremely narrow core, typically 8 to 10 micrometers in diameter. This physical constraint restricts the light to a single propagation path or ...



In fiber-optic communication, a single-mode optical fiber, also known as fundamental- or mono-mode, is an optical fiber designed to carry only a single mode of light - the transverse mode.

Contact Us

For more information, pricing, or custom network solutions, please contact us:

Website: <https://www.hashherbcafe.co.za>

Email: hello@hashherbcafe.co.za

Phone: +27 63 814 7295

Address: 15 Galaxy Road, Linbro Business Park, Johannesburg, 2065, South Africa

This document is for informational purposes only. Specifications subject to change without notice.

