

Function of lightning protection for distribution boxes



Overview

It is mainly used for lightning surge overvoltage protection in distribution systems and is used to protect electronic and electrical equipment from lightning electromagnetic pulse induced voltage, operating transients, and resonance overvoltage. It mainly has the following benefits. Higher protection: The surge protector uses advanced discharge technology and efficient absorption materials, which can quickly absorb the. In lightning protection, the surge protection device in distribution boxes plays a crucial role. According to the principle of graded lightning protection, and based on the likelihood of a building being struck by lightning, it is necessary to deploy surge protector against lightning in stages to. TRSX series power supply lightning protection boxes are mainly used in meteorology, transportation, post and telecommunications, computer networks, electricity, residential distribution boxes, railways and other fields. Power supply lightning protection is divided into three levels: B, C, and D.

Function of lightning protection for distribution boxes



Lightning waves will directly or indirectly invade power lines, signal lines, antenna feed lines and metal pipes. The resulting lightning and overvoltage ...



When a line is struck by lightning and pulse overvoltage occurs, the power supply lightning protection box quickly turns on within a nanosecond, releasing the overvoltage to the earth.



This article is an overview of the challenges and opportunities we now face in the lightning protection of electric power distribution systems. Specific topics are lightning protection of underground circuits, ...



If a distribution circuit is added to subtransmission pole with 7-#10 Copperweld or #6 Cu. pole ground wire and the static wire is used for the distribution system neutral, the pole ground wire must be ...



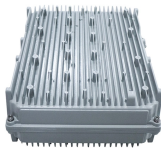
Lightning waves will directly or indirectly invade power lines, signal lines, antenna feed lines and metal pipes. The resulting lightning and overvoltage will cause great harm to electronic, ...



A Distribution Arrester is a high-performance surge protection device designed for installation on overhead power lines to safeguard transformers, insulators, and other distribution ...



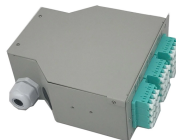
When a line is struck by lightning and pulse overvoltage occurs, the power supply lightning protection box quickly turns on within a nanosecond, releasing the ...



In areas with frequent lightning strikes, electrical equipment is easily damaged by lightning strikes. To reduce the damage caused by lightning strikes, the surge protector in the ...



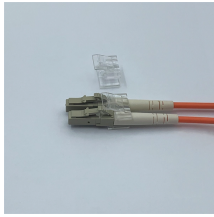
There are many ways to protect distribution systems from the damaging effects of lightning, some better than others. It is indeed a never-ending battle to mitigate lightning.



According to the principle of graded lightning protection, and based on the likelihood of a building being struck by lightning, it is necessary to deploy surge protector against lightning in stages to ensure the ...



It is mainly used for lightning surge overvoltage protection in distribution systems and is used to protect electronic and electrical equipment from lightning electromagnetic pulse induced ...



Generally, 1 ~ 2km lightning protection lines are erected in the incoming section of the substation, and lightning protection lines are erected in sections with strong lightning activity, or metal oxide lightning ...

Contact Us

For more information, pricing, or custom network solutions, please contact us:

Website: <https://www.hashherbcafe.co.za>

Email: hello@hashherbcafe.co.za

Phone: +27 63 814 7295

Address: 15 Galaxy Road, Linbro Business Park, Johannesburg, 2065, South Africa

This document is for informational purposes only. Specifications subject to change without notice.

