

Function of copper wire bridging in cable trays



Function of copper wire bridging in cable trays



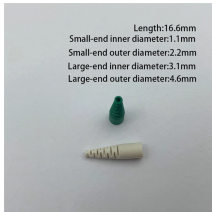
Cable tray wiring systems have conductor advantages over conduit wiring systems where the installations involve phase conductors installed in parallel.



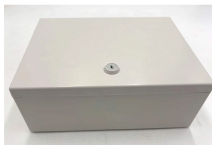
A function is a relation that uniquely associates members of one set with members of another set. More formally, a function from A to B is an object f such that every a in A is uniquely ...



The document discusses cable trays, which are structures used to securely support and distribute cables. It describes the different types of cable trays, including ...



It's time you own your health. Function starts with 100+ lab tests and personalized protocols for instant action. Tracked over time in one secure place.



The concept of a function was formalized at the end of the 19th century in terms of set theory, and this greatly increased the possible applications of the concept. A function is often denoted by a letter ...



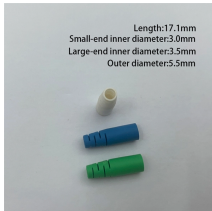
To maintain support of cables at changes of elevation or direction of a tray, a large number of specialized cable tray fittings are made compatible with each style and ...



But a function doesn't really have belts or cogs or any moving parts, and it doesn't actually destroy what we put into it! A function relates an input to an output.



FUNCTION definition: 1. the natural purpose (of something) or the duty (of a person): 2. an official ceremony or a.... [Learn more.](#)



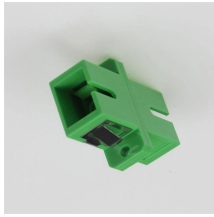
function, in mathematics, an expression, rule, or law that defines a relationship between one variable (the independent variable) and another variable (the dependent variable).



Cable tray length is selected based on the load to be supported, the distance between the supports (also referred to as the span), and handling and installation constraints.



Eaton's B-Line series metallic cable ladder systems are designed to provide superior strength to weight ratio while providing a lower total installed cost solution.



We also give a “working definition” of a function to help understand just what a function is. We introduce function notation and work several examples illustrating how it works. We also define ...



This is a strong metallic wire bridge that you may step into. It can resist heavy pedestrian traffic and provides easy crossing for persons with disabilities or mobility issues.



function, office, duty, province mean the acts or operations expected of a person or thing. function implies a definite end or purpose or a particular kind of work.



Cables and conductors must be secured to the cable tray at intervals according to installation instructions. For non-horizontal runs, cables should be fastened securely to transverse ...



Selecting the right cable tray accessories is crucial for the safety, stability, and ease of maintenance of any electrical system. This article provides a ...



The simplest definition is: a function is a bunch of ordered pairs of things (in our case the things will be numbers, but they can be otherwise), with the property that the first members of the pairs are all ...



These Guidance Notes provide ABS recommendations for the design and construction of cable trays and junction boxes. These Guidance Notes are applicable to fixed and floating offshore structures as ...



NEMA VE 1-2017 Specifies requirements for metal cable trays and associated fittings designed for use in accordance with the rules of Canadian Electrical Code, Part I and the National Electrical Code®



A solid understanding of the basics of functions, including the definition of a function, its notation, domain and range, and inverse functions, is essential for success in more advanced mathematical problem ...



It is recommended to use tinned copper stranded wire with a minimum cross-sectional area of 4mm^2 for bridging, with tinned copper lugs crimped at both ends. Iron bolts welded at both ...



Fittings can, on the one hand, be used for horizontal or vertical changing of the routing direction or, on the other, to change the height or width of the dimension. Practical examples for this are horizontal or ...



Copper bars must be attached to the cable tray supports all along the cable tray paths. In any case, earth conductor cross section must be able to accept the maximum fault current during a short circuit.

Contact Us

For more information, pricing, or custom network solutions, please contact us:

Website: <https://www.hashherbcafe.co.za>

Email: hello@hashherbcafe.co.za

Phone: +27 63 814 7295

Address: 15 Galaxy Road, Linbro Business Park, Johannesburg, 2065, South Africa

This document is for informational purposes only. Specifications subject to change without notice.

