

## Fire resistance rating classification of trough-type cable trays



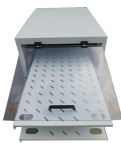
## Fire resistance rating classification of trough-type cable trays



These standards define the test conditions to verify that the system, made up of fire resistant trays, supports, accessories and cables, maintains the power supply for a certain time even in extreme fire ...



This cable can be installed in cable trays in Division 1 locations and can also provide fire protection. Cable tray systems must comply with article 318 with respect to ampacity, grounding, fill, spacing and ...



Cable tray installed in a hazardous location must contain only those cables that are appropriate for this type of environment as defined in Chapter 5 of the NEC.



Armorduct Systems" Cable Tray has achieved a E90 Fire Rating after carrying out testing in accordance with DIN 4102-12 at FIRES notified Technical Assessment Body (TAB), which is managed in ...



For large openings, install a fire-resistant backing plate before sealing. Layout and positioning must be reasonable to facilitate installation and maintenance. Choose appropriate fire ...



Trough-type fireproof cable trays shall be fully enclosed with covers and form a complete fireproof system together with fireproof sealing. During acceptance, verify the type test report, which shall ...



This guide explains what EI ratings mean in practice and how to specify them correctly. For the full selection matrix including environment and procurement, see the fire resistant cable tray ...



For large openings, install a fire-resistant backing plate before sealing. Layout and positioning must be reasonable to facilitate installation and ...




Our wind certification report provides you with list of acceptable B-Line series cable tray supports, fittings and covers based off of the environmental conditions, cable loading, and type of cable tray in your ...

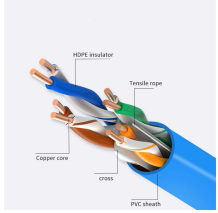


The hourly F and FH Ratings of the firestop system are equal to the hourly fire rating of the wall assembly in which it is installed.



It provides rules for acceptable wiring methods that can be installed in cable trays, including conditions for use. It addresses uses permitted and not permitted for ...

 <p><b>STAINLESS STEEL WIRE MESH</b> Long-lasting and durable Comprehensive specifications Customized non-standard products</p> <p>CE ISO CCC SAA</p>	<p>During acceptance inspection, the type inspection report shall be verified, with clear indications of F1/F2/F3/F4 grades and fire resistance duration. The fire rating must match the fire resistance rating ...</p>
--	---

 <p>HDPE insulator Trencher rope Copper core CRSS PVC sheath</p>	<p>UL 1257 is a widely recognized testing standard that evaluates fire-resistant cable tray and conduit assemblies. It ensures these components meet specific performance criteria under extreme ...</p>
---	--

## Contact Us

For more information, pricing, or custom network solutions, please contact us:

Website: <https://www.hashherbcafe.co.za>

Email: [hello@hashherbcafe.co.za](mailto:hello@hashherbcafe.co.za)

Phone: +27 63 814 7295

Address: 15 Galaxy Road, Linbro Business Park, Johannesburg, 2065, South Africa

This document is for informational purposes only. Specifications subject to change without notice.

