

## Fiber optic internet is available but the router cannot connect to the network



### Overview

Check the router's Internet IP address first by logging in to the management page and going to Advanced > Status. 0, the issue is likely with the modem connection or physical setup. Fiber optic networks are celebrated for their speed and reliability, but even the best systems can encounter problems. In many cases, a fiber connection problem originates from one of the following four devices: Router: Creates your Wi-Fi network in your home or business. 6 gigabits per second on compatible devices. You can learn more about it here. The Wi-Fi 6 Router allows you to reach faster speeds with Wi-Fi 6-compatible devices than you. To provide you more detailed instruction, you can also click ASUS Youtube video link below to know more about Troubleshooting for failed Internet access through router <https://youtu>.

## Fiber optic internet is available but the router cannot connect to the



Diagnose and fix common router problems with this expert guide Is your router not connecting to the internet? This can be a frustrating and disruptive issue, but it's most likely an easy fix.



Got no internet? Find solutions in our guide for fixing internet and Wi-Fi connection issues.



“To troubleshoot fiber network issues, start by inspecting physical connections, testing signal strength, and verifying device functionality. Use OTDR for advanced diagnostics and resolve ...



Check to See If Your Router's Internet Connection Is Active  
Try Connecting with An Ethernet Cable  
Troubleshoot The Internet Connection  
Check Your Computer For Viruses and Malware  
Use Other Devices  
Disable Your Antivirus Software  
Reset The Router's Settings  
Reset The Network Settings on Windows  
Contact Your Internet Service Provider  
If you tried all the above solutions and the router won't connect to the internet, you should contact your ISP and let them know you are having trouble accessing the internet. Maybe you could be facing some downtime, or something might have gone wrong. When you report, you raise an issue, and the team will work on diagnosing and fixing it. See more on windowsreport gfiber



Is your TP-Link router not connecting to the internet? Learn how to troubleshoot and fix the issue by checking your IP address, physical connections, and more



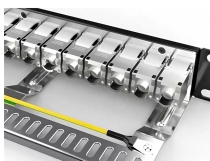
When experiencing issues with your fiber internet not working, use Brightspeed's troubleshooting guide . Find quick fixes for slow speeds, outages, and more!



Troubleshoot your router with our expert guide. Follow these steps to resolve connectivity issues and enhance your internet experience quickly.



Your router won't connect to the Internet? We go over 10 different methods that can resolve the issue. Keep reading to find out more details!



Fix a router not connecting to internet with troubleshooting steps. Check cables, reboot, update firmware, and resolve ISP or configuration issues quickly.



If the router can access the Internet normally, but the device (e.g. PC, laptop) cannot access the Internet when connected to the router, please refer to the FAQ below



Optical Network Terminal (ONT) troubleshooting guide: Tackling common glitches, step-by-step fixes, and preventive care for fiber-optic internet.

## Contact Us

For more information, pricing, or custom network solutions, please contact us:

Website: <https://www.hashherbcafe.co.za>

Email: [hello@hashherbcafe.co.za](mailto:hello@hashherbcafe.co.za)

Phone: +27 63 814 7295

Address: 15 Galaxy Road, Linbro Business Park, Johannesburg, 2065, South Africa

This document is for informational purposes only. Specifications subject to change without notice.

