

Fiber optic distribution boxes in stairwells cannot be used



Overview

NFPA 101 (2018 edition), Section 7. 1 (10) (b) prohibits installing conduits in a "separated exit enclosure" (stair tower) unless the conduits are "associated" with the exit enclosure. Internet Service Providers (ISPs) often face significant challenges related to Right of Way (ROW) when deploying fiber optic infrastructure or expanding their fiber networks. ROW refers to the legal right to install infrastructure (like fiber optic cables, utility poles, towers, and equipment) on. I know that per 1023. 5 of the code, there are no penetrations allowed in an interior exit stairway except for the items listed that serve the stair. Are you then allowed to run items inside the wall that. The National Electrical Code (NEC), adopted by Georgia and enforced by the various municipalities in Atlanta, provides clear guidelines on where electrical panels can and cannot be located. The manual should be used as a guide for projects providing telecommunications cabling, to include Outside Plant Co per, Fiber Systems and Protected Distribution Systems. shafts), the cable is to be a type that can prevent carrying fire from floor to floor. 2 meters (3-4 feet) deep to reduce the likelihood of accidentally being dug up.

Fiber optic distribution boxes in stairwells cannot be used



There are methods using robots to install fiber optic cable in storm sewers or other underground pipes. They have been used in center cities where construction is difficult but not widely.



“You cannot bring the OSP (non-flame rated) cable more than 50" into the building. It doesn't matter if you put it into conduit or pour concrete around the cable, it's against the code.



There are methods using robots to install fiber optic cable in storm sewers or other underground pipes. They have been used in center cities where construction is ...



I often hear AHJs say: “An interior exit stairway shall not be used for any purpose other than as a means of egress.” And yes, the International Building Code (IBC) Section 1023.1 does ...



A common violation seen in both older homes and some renovations is the installation of electrical panels in stairwells. Let's break down why this is a serious issue and what you should do if you ...



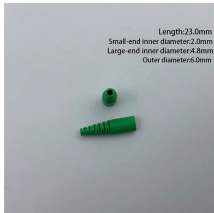
Due to rapidly changing technologies, Fort Hood, NEC anticipates the reduction of copper to fiber as part of Unified Communications (VOIP); and the introduction of new technologies such as Passive Optic ...



Fiber splice locations with reflections are not acceptable and will be rejected. This does not include connectors used during testing, jumpers at panels, or patch panel ports.



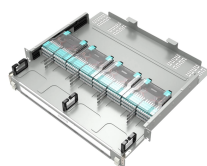
Step-by-step guide to fiber optic installation in apartment buildings and MDUs. Riser cabling, floor distribution, apartment entry methods, and cost-saving tips.



It would be extremely convenient for me to horizontally pass through a stairwell in a commercial property to feed a subpanel on the other side of the stairwell.



Wanted to see if anyone had any thoughts on allowing something to pass through the stairwell if it was segregated from the space with a rated separation. lets say a conduit or duct ...



Exception No. 1 states that optical fiber cables are not required to be listed and marked when the length of the cable within the building, measured from the point of entrance, does not exceed 50 ft. and the ...



Building fiber optic networks in rural areas, especially through challenging environments like farms and forests, presents several unique Right of Way (ROW) issues.

Contact Us

For more information, pricing, or custom network solutions, please contact us:

Website: <https://www.hashherbcafe.co.za>

Email: hello@hashherbcafe.co.za

Phone: +27 63 814 7295

Address: 15 Galaxy Road, Linbro Business Park, Johannesburg, 2065, South Africa

This document is for informational purposes only. Specifications subject to change without notice.

