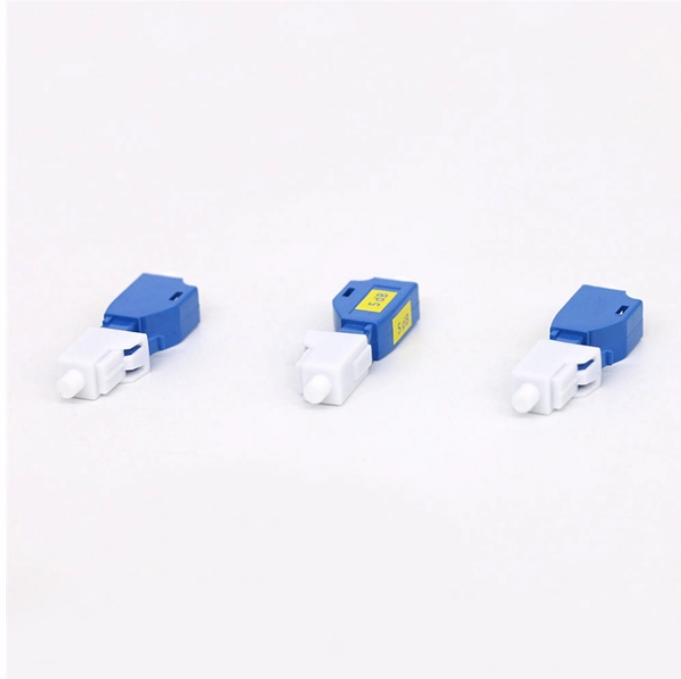


## Fiber optic OSI is single-mode



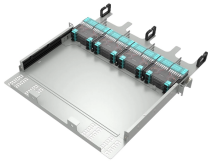
### Overview

OS1 single mode fiber optic cables are made with a single mode fiber core, which means that they have a very small core diameter of 9 microns. This allows the cables to transmit data over much longer distances than multimode fibers, with less signal loss and better quality. In ISO/IEC 11801 and EIA/TIA standards five types of Multimode -. In the complex landscape of fiber optic infrastructure, selecting the right cable type—single-mode (OS1/OS2) or multimode (OM1/OM2/OM3/OM4/OM5)—can define a network's speed, reach, and cost-effectiveness. The designations indicate a particular level of performance.

## Fiber optic OSI is single-mode



Single-mode fiber is generally better for high-speed, long-distance internet connections because it minimizes signal loss and supports higher bandwidth. However, multimode fiber can still ...



By controlling the geometry, engineers design fibers to propagate either many paths or just a single path, which determines the ultimate capabilities of the optical link. Single-Mode Fiber ...



Learn all about the differences between single mode and multimode cables, as well as the various fiber wavelengths and standard core sizes used in fiber optics.



Single-mode fiber is generally better for high-speed, long-distance internet connections because it minimizes signal loss and supports higher ...



Although single mode fiber (SMF) and multimode fiber (MMF) optic cable types are widely used in diverse applications, the differences between ...



Explore the differences between OS1, OS2 (single-mode) and OM1, OM2, OM3, OM4, OM5 (multimode) fibers. Learn their speeds, distances, and ideal uses for data centers and telecom networks.



What are OM and OS type fiber optic cables? Fiber optic cables used in telecommunication are broadly categorized into two types - Multimode fiber and Single-mode fiber ...



Unlike multi-mode optical fiber, single-mode fiber does not exhibit modal dispersion. This is due to the fiber having such a small cross section that only the first mode is transported.



ISO/IEC 11801 fiber optic labels: OS for singlemode, OM for multimode. OM1-OM4 & OS1-OS2 vary by performance & material. Some designations differ.



For connecting separate buildings across a campus, Single-Mode Fiber (SMF) is mandatory. It supports distances of 10km to 40km (and further with specialized optics), making it ...



There are two main types of fiber optic cables: single mode fiber and multimode fiber. Single mode fiber optic cables feature a narrow core diameter, allowing only a single mode of light to ...

## Contact Us

For more information, pricing, or custom network solutions, please contact us:

Website: <https://www.hashherbcafe.co.za>

Email: [hello@hashherbcafe.co.za](mailto:hello@hashherbcafe.co.za)

Phone: +27 63 814 7295

Address: 15 Galaxy Road, Linbro Business Park, Johannesburg, 2065, South Africa

This document is for informational purposes only. Specifications subject to change without notice.

