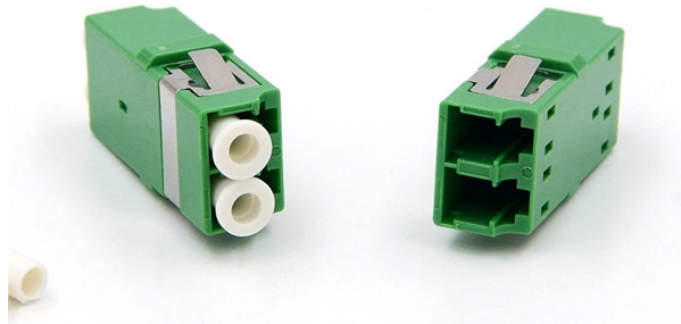


# Fiber Optic Patch Cord Through-hole Protection



## Fiber Optic Patch Cord Through-hole Protection



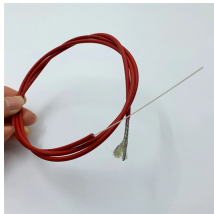
Fiber optic cable which passes through manholes containing petroleum-based waste will require special protection. Some petroleum products will deteriorate the cable's polyethylene sheath.



Fiber optic cable protection tube and fiber and optic protection tubing online at Essentra Components US. Download our latest catalog, get free quotes and samples, view 3D CADs.



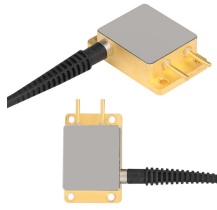
GT-LCSTDS2Y-xM fiber optic patch cords are ideal for short distance patching applications. These fiber optic cables tested for insertion loss and reflectance on all connectors.



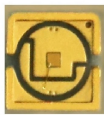
FiberOpticCable is leading manufacturer of fiber optic cable. Buy quality fiber optic patch cables and fiber optic patch cords with best prices.



Explore fiber optic patch cords for telecom, data centers, and FTTH. From LC/SC to MPO/MTP and armored jumpers, ZION Communication offers high-quality, customizable fiber patch ...



Whether you're running cable through walls, ceilings, raised floors, or underground pathways, our products help prevent damage from crushing, bending, and abrasion.



Either picture of fiber coiled on backboard if no panel is installed, or picture of mounted term panel after fiber has been spliced and tested. Pictures need to be delivered to NoaNet within 24 hours of being ...



Explore fiber optic hand holes for secure broadband installations. Millennium supports rural connectivity with durable hand holes and expert solutions.



Yingda offer pushable patch cable with armored cable, LSZH or TPU for optical fiber go through a wall by drilling a hole less than 10mm, best for Telecommunication, FTTx deployment.



Explore fiber optic patch cords for telecom, data centers, and FTTH. From LC/SC to MPO/MTP and armored jumpers, ZION Communication offers ...



Confused by LC, SC, MPO, UPC, and APC? This complete fiber optic patch cable guide covers connector types, single-mode vs multimode, insertion loss specs, and how to choose the right ...

## Contact Us

For more information, pricing, or custom network solutions, please contact us:

Website: <https://www.hashherbcafe.co.za>

Email: [hello@hashherbcafe.co.za](mailto:hello@hashherbcafe.co.za)

Phone: +27 63 814 7295

Address: 15 Galaxy Road, Linbro Business Park, Johannesburg, 2065, South Africa

This document is for informational purposes only. Specifications subject to change without notice.

