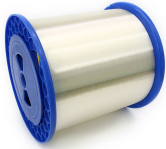


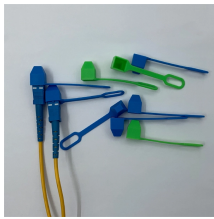
## Fiber Optic Panels for Commercial Buildings



## Fiber Optic Panels for Commercial Buildings



Fiber optic cabling and fiber-ready enclosures, including rack trays and wall-boxes, are often used for MDF and IDF wiring because they support long cable distances and very fast network speeds.



Navigate our comprehensive collection of fiber optic products with the assistance of our experienced team. Our knowledgeable experts are ready to discuss product specifics, confirm compatibility, and ...



If you're considering fiber upgrades, backbone expansion, or new commercial installations, visit our fiber and network cabling services page to learn how Cabling Wizards handles design, installation, testing, ...



Consolidate your fiber optic connections in industrial environments with our DIN rail patch panel, with a modular design and tool-free installation save space and simplify deployment.



Updated for 2026: In this 2026 guide, we break down fiber optic cable types for commercial buildings—single-mode vs multimode, OM3/OM4 options, and plenum vs riser vs ...



One Fiber helps building owners and landlords set themselves apart by offering innovative fiber-optic and 5G wireless services built to handle resource-hungry applications.



Fiber infrastructure is increasingly standard for commercial buildings. In this comprehensive guide, we'll explore the best fiber optic installation companies, focusing on their ...



Commercial fiber optic cabling for backbones, risers & campus runs. Single-mode and multimode fiber installation for building backbones, MDF-to-IDF runs, inter-building campus links and data center ...



Compare Cat6 copper cabling and fiber optic for commercial buildings. Learn which is right for your hotel, warehouse, or office based on speed, distance, and cost requirements.



Selecting the right fiber optic solution depends on your building layout, performance requirements, and budget. While all fiber cabling improves speed and reliability, different designs and installation ...

## Contact Us

For more information, pricing, or custom network solutions, please contact us:

Website: <https://www.hashherbcafe.co.za>

Email: [hello@hashherbcafe.co.za](mailto:hello@hashherbcafe.co.za)

Phone: +27 63 814 7295

Address: 15 Galaxy Road, Linbro Business Park, Johannesburg, 2065, South Africa

This document is for informational purposes only. Specifications subject to change without notice.

