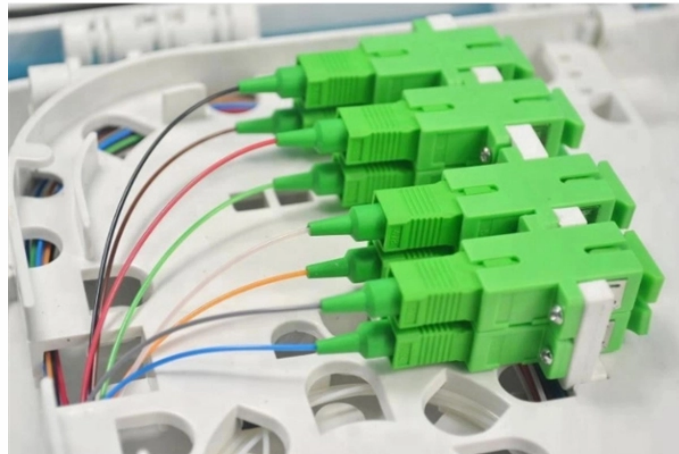


Fiber Optic Flange Adapter Dimensions



Fiber Optic Flange Adapter Dimensions



LBTEK offers custom services for special requirements including different materials, dimensions, and surface treatments. For customization needs, please contact technical support.



We provide fiber optic jumper adapters with narrow or wide key FC/PC, narrow or wide key FC/APC, SMA, ST/PC connectors; Made of stainless steel material, it can be used in clean spaces or vacuum ...



There are flanged and flangless versions available with many colours options .Adapters meet the international standards IEC 61754-4 / TIA 604-3 and are naturally RoHS/REACH compliant.SC ...



TIA-604-10, FOCIS-10, GR-326, or IEC 61300 series, IEC 61754-20. Adapters provide ≤ 0.2 dB insertion loss and support an operational tempe of -40 oC to $+85$ oC and come with protective cap



Fiber Optic Adapter, FC-ST Singlemode Simplex (flange mount) Normally used to connect two fiber optic cables one with a standard ST (male) connector and one with a standard FC (male) connector. ...



A fiber optic adapter, sometimes also called a coupler, is a small device designed to terminate or link the fiber optic cables or fiber optic connectors between two fiber optic lines.



The SC footprint means the adapter size matches the dimensions of an SC simplex adapter, enabling compatibility with standard SC adapter cutouts in patch panels or cassettes.



SC Simplex Adapters fit the most common fiber optic footprint, and are perfect for a majority of wall-mounts and patch panels. Our SC Simplex Adapters fit standard SC cutouts for patch panels, ...



Ideal for removing the outer jacket from multi-core fibre optic cables between 4.5 and 25mm in diameter. The stripper removes the jacket by slitting the sheath around the cables circumference and then ...



6 / 7W5 / 7W6 Series SENKO's MPO-PLUS SC footprint is a durable one-piece design that fits standard SC adapter openings, ideal for current SC layouts. It features an optional unique external shutter to ...

Contact Us

For more information, pricing, or custom network solutions, please contact us:

Website: <https://www.hashherbcafe.co.za>

Email: hello@hashherbcafe.co.za

Phone: +27 63 814 7295

Address: 15 Galaxy Road, Linbro Business Park, Johannesburg, 2065, South Africa

This document is for informational purposes only. Specifications subject to change without notice.

