

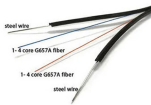
Fiber Optic Cable Tension Sag Meter



Fiber Optic Cable Tension Sag Meter



Lightweight, low inertia 32 mm diameter rollers for speeds up to 2000 m/min or, optionally, up to 4000 m/min (K). The analog display shows changing and fluctuating tensions fast ...



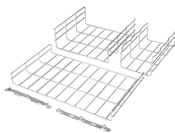
High-quality tension force sensor for fiber optic can measure tensions of 10N, 20N, 30N, 50N, 100N, 200N, and 500N, with an output sensitivity of 1.0 ± 0.05 mV/V and a zero-point output of $\pm 1\%$ F.S. ...



ROKTOOLS Optical Fiber Yarn Wire Tension Meter Gauge takes 62 tension measurements per second and displays the average of these measurements over a user-selected interval of 0.5, 1.0, 2.0 or 4.0 ...



DynaTension® meters compute the corresponding tension more accurately than conventional load cells, piezo- electric devices or dynamometer spring deflection methods. This meter operates by sensing ...



This high-quality tension force sensor measures forces ranging from 10N to 500N with an output sensitivity of 1.0 ± 0.05 mV/V and zero output accuracy of $\pm 1\%$ F.S. It supports a maximum load of ...



We offer a wide variety of 3-Roller Tension Sensors with different roller/pulley types, profiles, materials, and sizes to cover a wide range of applications including wires, cables, yarns/fibers, optical fibers, ...



With our wide selection of guide rollers, with line speeds up to 6000 m/min, our tension testers are suitable for a variety of applications in the textile, fiber and wire industry.



ACES CATS is a unique tool that helps you calculate cables sag and tension depending on span length. Discover today with a few simple steps!



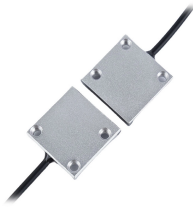
Lightweight, low inertia 32 mm diameter rollers for speeds up to ...



SpanMaster software takes users through a logical step-by-step process of information entry and produces sag and tension results for any cable span.



DynaTension® meters compute the corresponding tension more accurately than ...



For decades, our mechanical and electronic tension meters have helped manufacturers, utilities, and maintenance teams measure wire, cable, fiber, and filament tension accurately, repeatably, and with ...

Contact Us

For more information, pricing, or custom network solutions, please contact us:

Website: <https://www.hashherbcafe.co.za>

Email: hello@hashherbcafe.co.za

Phone: +27 63 814 7295

Address: 15 Galaxy Road, Linbro Business Park, Johannesburg, 2065, South Africa

This document is for informational purposes only. Specifications subject to change without notice.

