

Fiber Optic Cable Temperature Cyclic Operation



Overview

Temperature cycling is a key component in fiber optic cable qualification. The combination of coefficient of linear thermal expansion (CLTE), excess fiber length (EFL), and subunit free space determine the success of the qualification (and installed use) for dry loose tube type. How Temperature Affects Optical Fiber Performance Optical fiber's core (typically silica glass, SiO_2) and surrounding components (coating, buffer tube, jacket) react differently to temperature changes, leading to two primary issues: signal attenuation and mechanical damage. This paper. Home - Blog - Relationship Between Temperature and Fiber Optic Cable The temperature limit for fiber optic cable typically ranges from -40°C to 70°C , although some cables may have a wider temperature range depending on their design and intended use. Specialized cables can also be manufactured to. everywhere. Fiber Optic Transceiver manufacturers test these devices to assure optical transceivers circuits work at certain temperatures.

Fiber Optic Cable Temperature Cyclic Operation



(From Project No. SP-3-1768-RV2-RF1, formulated under the cognizance of the TIA TR-42 Telecommunications Cabling Systems, TR-42.12 Subcommittee on Optical Fibers and Cables).



Fiber Optic Transceiver manufacturers test these devices to assure optical transceivers circuits work at certain temperatures. This is to guarantee reliability of these high speed fiber optic transceivers used ...



This article provides a detailed guide on the operating temperature range for fiber optic cables, from -40°C to +70°C, and offers insights into the importance of temperature management in fiber optic ...



The maximum operating temperature for fiber optic cable is typically around 70 degrees Celsius (158 degrees Fahrenheit). Exceeding this temperature limit can lead to degradation of the cable's ...



We'll explore thermal limits for different fiber types, explain how temperature affects fiber performance, break down application-specific thermal challenges, and provide actionable tips for choosing the right ...



UNIVER TCC-1000 and TCC-2000 Series Temperature Cycling Chambers are specially designed to perform temperature cycling tests on optical fiber cables, evaluating the stability of optical attenuation ...



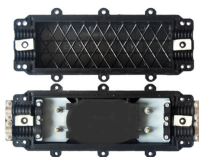
In order to effectively pull cable without damaging the fiber, it is necessary to identify the strength material and fiber location within the cable. Then, use the method of attachment that pulls most ...



Temperature fluctuations can significantly influence the attenuation rates of fiber optic cables. Higher temperatures tend to increase the attenuation due to alterations in the glass's ...



Temperature cycling is a key component in fiber optic cable qualification. The combination of coefficient of linear thermal expansion (CLTE), excess fiber length (EFL), and subunit free space determine the ...



Eaton glass fiber optic cables are available in 2 models; the PVC jacket models for most applications and stainless steel for high temperature and harsh environments:

Contact Us

For more information, pricing, or custom network solutions, please contact us:

Website: <https://www.hashherbcafe.co.za>

Email: hello@hashherbcafe.co.za

Phone: +27 63 814 7295

Address: 15 Galaxy Road, Linbro Business Park, Johannesburg, 2065, South Africa

This document is for informational purposes only. Specifications subject to change without notice.

