

Fiber Optic Cable Protective Steel Trench



Fiber Optic Cable Protective Steel Trench



Direct burial fiber optic cables are engineered with enhanced protective features for underground placement without conduit. These cables typically incorporate corrugated steel armor ...



Personnel feeding cable into a feed-chute must make sure that they do not position themselves inside a cable loop. Hearing protection may be required by vehicle operators. Pre-ripping provides a safety ...



Fiber optic cable sequential numbers are required at each pole location and vault wall. Sequential numbers will identify conduit length, and slack left in vaults and at poles.



Product Overview GYTS53 is an outdoor optical fiber cable commonly specified for underground direct buried routes where higher mechanical protection is required. It uses a stranded loose tube core with ...



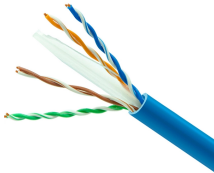
The armoring of optical fiber cables shall be lugged and bonded to an earth bar using a soft multi-stranded 6 mm² green / yellow insulated bonding cables. Bonding cables shall be kept as short as ...



The armoring of optical fiber cables shall be lugged and bonded to an earth bar using a soft multi-stranded 6 mm² green / yellow insulated bonding cables. Bonding ...



Oldcastle Infrastructure offers a solution for cable distributions and management with a three-sided trench. Trench components have superior chemical resistance, strength, low water absorption, and ...



Whether you're managing power distribution, fiber optics, control systems, or signal cables, Waskey's trench system keeps your network protected and accessible.



Q4: Can fiber optic cable be buried in the same trench as electrical power lines? A: Yes, because fiber optic cable is non-conductive (dielectric), it is immune to electromagnetic interference (EMI).



The document describes the steps involved in constructing a cable trench, which is a buried or attached structure that holds fiber optic cables and conduits.



Installation is similar to installing a messenger wire except it also includes a fiber optic cable that requires careful handling like any other fiber optic cable.

Contact Us

For more information, pricing, or custom network solutions, please contact us:

Website: <https://www.hashherbcafe.co.za>

Email: hello@hashherbcafe.co.za

Phone: +27 63 814 7295

Address: 15 Galaxy Road, Linbro Business Park, Johannesburg, 2065, South Africa

This document is for informational purposes only. Specifications subject to change without notice.

