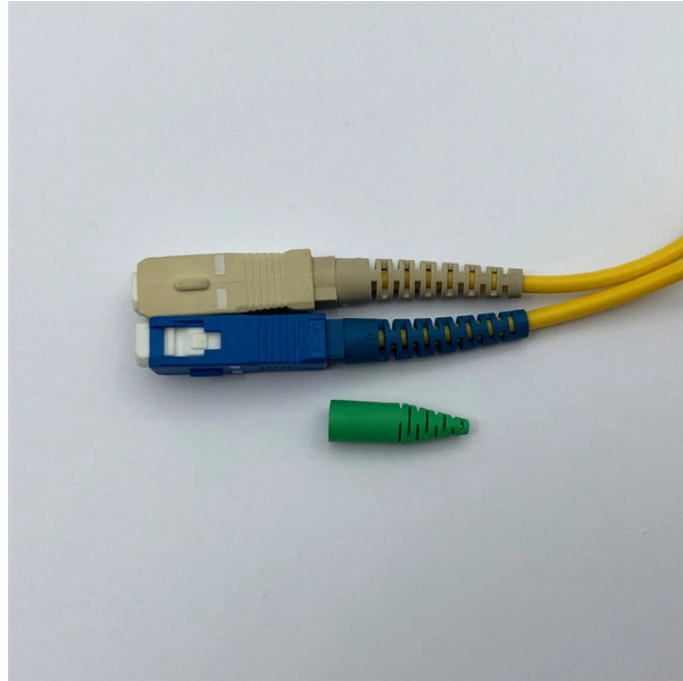
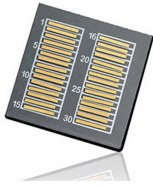


## Fiber Optic Cable Fusion Box 6



## Fiber Optic Cable Fusion Box 6



The plastic splice box offers the functions of mechanical/fusion splicing, splitting, and distribution. It is waterproof and suits indoor and outdoor applications.



Our fiber optic splice enclosures are designed to protect and organize fiber splices in rack-mounted or wall-mounted installations. Made from durable aluminum or steel, these enclosures provide a secure ...



FS provides professional tech support and sales inquiry. Providing industry-leading limited lifetime warranty. Refunds will be received about 5 business days after the receipt of returned ...



Core Alignment Fusion Splicer with 6 motors  
900um/250um holder included!! Size: 4.8 x 4.88 x 5.4 (in) Weight: 3.4 lbs. (w/o battery) Fastest Splicing Time 6 sec with single mode fiber 10 sec Heating time ...



Fiber optic splice trays are designed to provide a location to store and to protect the fiber cables and the splices. Each tray provides space for mounting fiber splice protectors and excess fiber.



Corning splice trays use proven designs and fiber organization technology to provide optimum physical protection for fusion and mechanical splicing methods. The trays are engineered for use with indoor ...



FBR-11606 Fiber-Optic Distribution Box, 6-Core is a high quality product by Bud Industries used for electronic enclosure applications.



The 6-core optical fiber distribution box is used for the fusion splicing, splitting, wiring transmission and other functions of the optical transmission terminal.



Equipped with core and clad alignment tech, 6-high-precision motors, 3- in. -1 fiber holder, our fiber fusion splicer ensures fast splicing in just 6s and quick heating in 13s. With 5 in. touch screen and ...



Gcabling is a leading fiber box manufacturer & supplier. We can manufacture and supply a wide range of fiber termination boxes with 20+ years of experience.

## Contact Us

For more information, pricing, or custom network solutions, please contact us:

Website: <https://www.hashherbcafe.co.za>

Email: [hello@hashherbcafe.co.za](mailto:hello@hashherbcafe.co.za)

Phone: +27 63 814 7295

Address: 15 Galaxy Road, Linbro Business Park, Johannesburg, 2065, South Africa

This document is for informational purposes only. Specifications subject to change without notice.

