

Fiber Distribution Box Metal 16 Channels



Fiber Distribution Box Metal 16 Channels



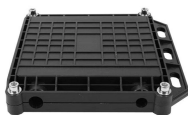
The wall mounted metal box supports a variety of front adapter panel, allowing termination of SC, LC, FC, and ST connectors, and accommodates up to 16 fiber connections.



It integrates fiber splicing, splitting, distribution, storage, and cable connection into one unit, providing robust protection and efficient management for FTTX network infrastructures.



Fiber Distribution box contains the shell, the internals (supporting frame, set fiber disc, fixing device) and optical fiber joint protective element. Prominent advantages of fiber termination box lie in efficient ...



Our 16 port fiber distribution box (FDB) or fiber distribution hub (FDH) features 2 fiber cable inlet ports and 16 drop cable outlet ports, turnable inner tray for easy fiber splices, excess cable routing and ...



Our 16 core distribution boxes are ideal for OEM/ODM projects, large-scale fiber deployment, and telecom contractors. With our box, you can easily manage, distribute, and protect your fiber network ...



The SJ-ODB-M19-16 fiber optic box indoor is a wall/pole-mountable metal fiber optic distribution box with 1×16 splitter capacity, designed for FTTH/FTTB networks to connect and protect multiple fiber optic ...



With the function of the mechanical splice, fusion splice, light splitting, and wiring distributions. It can accommodate 2pcs 1×8 PLC cassette splitter. The fiber access terminal box is with Anti-UV, Ultra ...



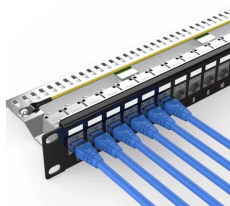
The wall mounted metal box supports a variety of front adapter panel, allowing ...



Explore the features and parameters of BOD-016B 16 Core Fiber Distribution Box Contact OTRANS for Your Telecommunication Equipment Solutions.



The fiber splicing, splitting, distribution can be done in this box, and meanwhile it provides solid protection and management for the FTTx network building.



HTB8001 is a 16-port fiber distribution box for FTTH and telecom networks, supporting termination, splicing, and clean cable management in indoor deployments.

Contact Us

For more information, pricing, or custom network solutions, please contact us:

Website: <https://www.hashherbcafe.co.za>

Email: hello@hashherbcafe.co.za

Phone: +27 63 814 7295

Address: 15 Galaxy Road, Linbro Business Park, Johannesburg, 2065, South Africa

This document is for informational purposes only. Specifications subject to change without notice.

