

Factory Electrical Distribution Box Maintenance Standards and Requirements



Factory Electrical Distribution Box Maintenance Standards and Requirements



This paper discusses basic electrical distribution maintenance concepts, including the purpose and characteristics of different types of maintenance, frequency of maintenance intervention, and spare ...



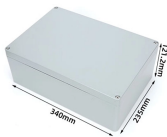
To ensure safety, efficiency, and meet the increasing demand for usage, the electrical distribution system needs to meet the following requirements: The system must operate continuously ...



It outlines how electrical systems should be inspected, tested, and serviced to maintain a safe condition. The standard defines what a documented electrical maintenance program must include and ...



The document provides a 16 item checklist for inspecting a main distribution board or panel board.



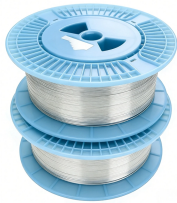
Electrical Distribution Maintenance User's Note: It is recommended to adapt this checklist as necessary because it may contain terms unique to maintenance. The user must utilize the proper statistics, ...



Schneider Electric FSRs are committed to high-quality approaches and have detailed maintenance procedures (planning, prevention plans, installed base readings, safety, executing work, reporting, ...)



Sufficient access and working space shall be provided and maintained about all electric equipment to permit ready and safe operation and maintenance of such equipment.



Schneider Electric FSRs are committed to high-quality approaches and have detailed maintenance procedures (planning, prevention plans, installed base readings, safety, executing work, reporting, ...)



Survey and analysis of electrical equipment and systems to determine maintenance requirements and priorities. Developed and documented maintenance procedures for equipment.



These procedures were developed as key elements in a preventive maintenance program and are based on manufacturers' recommendations, industry standards, and past service history.

Contact Us

For more information, pricing, or custom network solutions, please contact us:

Website: <https://www.hashherbcafe.co.za>

Email: hello@hashherbcafe.co.za

Phone: +27 63 814 7295

Address: 15 Galaxy Road, Linbro Business Park, Johannesburg, 2065, South Africa

This document is for informational purposes only. Specifications subject to change without notice.

