

Fabrication of Commonly Used Prefabricated Distribution Boxes



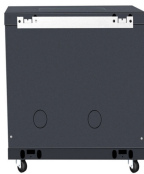
Fabrication of Commonly Used Prefabricated Distribution Boxes



The most popular made-to-stock assembly is our TP403 box with a TP711 ground tail installed. These are available at our distribution stock centers and ship in about 3 to 5 days from receipt of order.



This article covers the types, features, and advantages of power DB boxes, as well as their manufacturers and frequently asked questions.



A commonly used distribution box contains doorbells, earth leakage devices, timers, or contact breakers. However, the distribution boxes have several sizes and designs suitable for ...



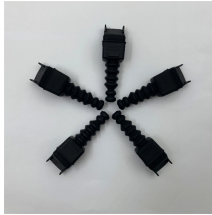
With prefabrication, assembly is completed in a space devoted to the production and storage of components. By completing these tasks off-site, contractors can mass-produce assemblies used in ...



Learn the step-by-step distribution box manufacturing process—from design and material selection to assembly and testing. E-abel provides high-quality electrical enclosures with customization options ...



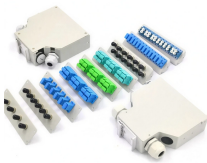
We offer a variety of different designs including one piece, three piece, and multi-piece configurations. With standard and customizable options, these vaults are the perfect example of value-added ...



This production line is equipment for production of distribution boxes. The strip coil to be processed is manually placed on the uncoiler, and then corrected and tensioned.



Electrical prefabrication includes different types of prefabs, including hanger cables, lighting fixtures, conduit bends, electric box assemblies, pre-cut wires, outlet boxes, and pre-cut ...



Businesses across San Jose, CA rely on durable, large-format bulk boxes to protect oversized goods, industrial components, and sensitive equipment moving throughout Silicon Valley and the Bay Area.



From the initial metal shaping and precise punching, through the critical fabrication of the power-carrying busbar and careful mounting of breakers, to the exhaustive electrical testing ...

Contact Us

For more information, pricing, or custom network solutions, please contact us:

Website: <https://www.hashherbcafe.co.za>

Email: hello@hashherbcafe.co.za

Phone: +27 63 814 7295

Address: 15 Galaxy Road, Linbro Business Park, Johannesburg, 2065, South Africa

This document is for informational purposes only. Specifications subject to change without notice.

