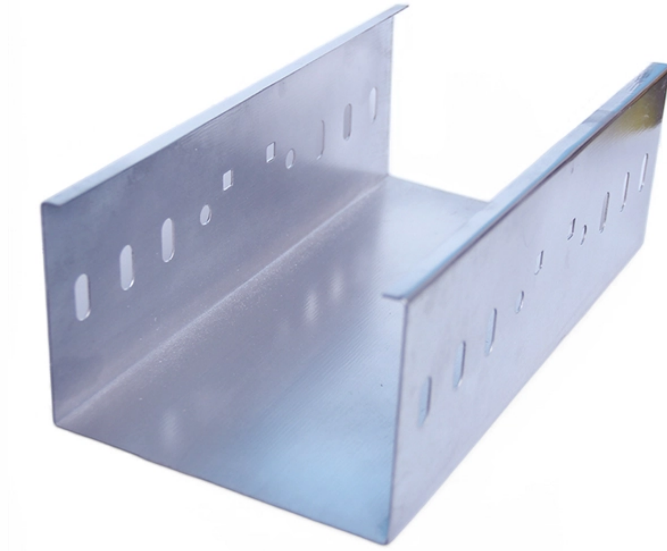


Explosion-proof distribution box rotary switch power supply



Explosion-proof distribution box rotary switch power supply



Can be used in Zone 1,2,21,22 Class I, Zone 1,2 Division 1, Groups C, D Flameproof enclosure (Ex d IIB)The main switch and branch switch are operated with the external rotary actuator. Internal wiring ...



Take control of your electrical safety today with this complete set of customized distribution boxes. Choose an explosion-proof distribution box for reliable power distribution, easier maintenance, and ...



Can be used in Zone 1,2,21,22 Class I, Zone 1,2 Division 1, Groups C, D ...



Durable Hexlon Explosion Proof Distribution Boxes and Electrical Enclosures, IECEx and ATEX certified for Zone 1 and Zone 2.



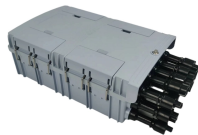
With our in-depth expertise and many years of experience, R. STAHL is the perfect partner for explosion-protected power distribution in any instrumentation and control engineering, battery ...



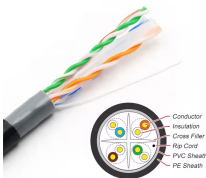
Flameproof and explosion proof, these power overhaul distribution boxes are suitable for use in hazardous areas. Main switch: Maximum current is 180A. Branch circuit: Maximum current is 6~95A. ...



·Equipped with specialized hinge structure, which can prevent the flameproof joints from damage when opening and closing the box, and greatly prolong the service life of box. The boxes can be combined ...



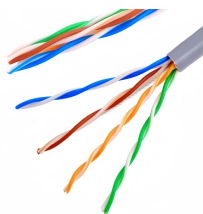
International brand of terminal used. Copper-free aluminium (carbon steel), powder coated surface, or stainless steel. Entries plugged. Cable glands on request (see here). Special requirements can be ...



Explosion-proof Power Distribution Panel MAMX-02 and MAMX-03 * In-built circuit breaker, AC Contactor, Thermorelay, PLC, Transducer, Soft starter and other components, The panel can install ...



Explosion Proof Switch w/ Potentiometer - 24V DC, C1D1, C2D1 - 1-10K Ohms - Rotary Dial - Double Gang Box \$2144.88



Packaging should be the same as what is found in a retail store, unless the item was packaged by the manufacturer in non-retail packaging, such as an unprinted box or plastic bag.

Contact Us

For more information, pricing, or custom network solutions, please contact us:

Website: <https://www.hashherbcafe.co.za>

Email: hello@hashherbcafe.co.za

Phone: +27 63 814 7295

Address: 15 Galaxy Road, Linbro Business Park, Johannesburg, 2065, South Africa

This document is for informational purposes only. Specifications subject to change without notice.

