

Explanation of Quota for Finished Distribution Boxes



Explanation of Quota for Finished Distribution Boxes



Discipline or terminate you for failing to meet a quota requiring so much work or speed that it prevents you from taking meal or rest breaks, using the bathroom, or following CalOSHA ...



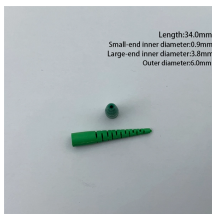
A new Washington law regulating employers' use of production quotas or production standards for employees working at warehouse distribution centers (House Bill 1762) will go into ...



Replacement quota is intended to replace material from the current quota year and not a means to replace disposed samples, analytical samples, product development material, or inventory acquired ...



The Washington State Department of Labor & Industries (L& I) has adopted rules regarding safety standards for quotas at warehouse distribution centers. The Division of ...



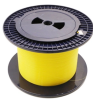
Starting July 1, 2026, this bill limits the extent to which employers at certain warehouse distribution centers can require their employees to meet production quotas.



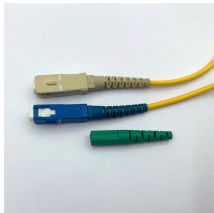
Safety Standards for Quotas for Warehouse Distribution Centers Chapter 296-35 WAC Last Update: May 31, 2024 This book contains General Safety and Health Standards, as adopted under the ...



What does the term "in proper form" mean for quota reporting purposes and why is this important? What happens when an entry summary is not submitted in proper form?



On August 31, 2023, DEA published a final rule ("Final Rule") regarding its management of controlled substance and List 1 Chemical ("L1 Chemical") quotas for DEA-registered manufacturers.



The new law prohibits employers from retaliating against employees for requesting information about quotas, complaining about the impact of a quota on their ability to take meal or rest breaks or ...



Coverage applies to an employer who has either 100 or more employees at a warehouse distribution center or 1,000 or more employees at any number of warehouse distribution centers in Oregon.



Warehouse distribution centers should prepare for increased regulation over their use of employee production quotas. Many employers use quotas to monitor employee performance and set minimum ...

Contact Us

For more information, pricing, or custom network solutions, please contact us:

Website: <https://www.hashherbcafe.co.za>

Email: hello@hashherbcafe.co.za

Phone: +27 63 814 7295

Address: 15 Galaxy Road, Linbro Business Park, Johannesburg, 2065, South Africa

This document is for informational purposes only. Specifications subject to change without notice.

