

Explanation of Cable Quota in Vertical Shaft Cable Trays



Overview

31 (C) now aligns with the Code's broader language (like Article 392), allowing these smaller conductors and detailing how to calculate ampacities, the number of conductors permissible in cable trays, how to size cable trays correctly by width, layering. The updated section 690. Cable tray is the preferred wiring method for industrial facilities, data centers, and large commercial buildings where routing dozens or. Stop Costly Cable Tray Installation Errors Now: Avoiding Mistakes in Instrumentation Cable Tray Installation: A Guide for EPC Projects Cable tray sizing in real EPC projects is not limited to simple area calculation. Additional engineering factors must be considered to ensure safety, reliability. us-trations without notice. All illustrations, descriptions and technical information included in this document are provided as indications and can cable trays are equivalent. The mechanical and electrical characteristics, tests, certifications, overall quality management, recommendations mentioned. Our free calculator helps you determine the correct tray size based on NEC and IEC standards. Select Fill Standard: Choose 40% for power cables (NEC compliant) or 50% for. Cable Tray Manual AN IN-DEPTH LOOK AT 2011 NEC® ARTICLE 392 - CABLE TRAY

(The following code explanations are to be used with a copy of the 2011 NEC.
) ® To obtain a copy of the NEC® contact: National Fire Protection
Association® 1 Batterymarch Park • P.

Explanation of Cable Quota in Vertical Shaft Cable Trays



In-depth guide to cable trays, focusing on NEC Article 392. Covers types, selection, installation, and safety standards for electrical systems.



Easily calculate cable tray fill ratios with our free tool. Supports mixed cable sizes, NEC 40% rules, and metric/imperial units. Download your PDF report instantly.



NEC Article 392 explains cable trays, their components, appropriate wiring methods for cable trays, and instances where they are and are not permitted for use. It also focuses on ...

DATA ADJUSTABLE, EASY TO USE



When fitting cable trays and their accessories, the products are cut on site to create changes of direction, adjust sections, etc. Damage can also occur during handling; as a result, both the ...



Cable ampacity in cable tray is governed by NEC 392.80, which references specific tables depending on the cable type and tray configuration. The ampacity values in these sections ...

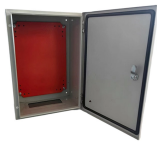
Mesh door/glass door optional



Not all cable trays are equivalent. The mechanical and electrical characteristics, tests, certifications, overall quality management, recommendations mentioned in this technical guide only apply to our ...



Historically, the NEC has allowed cable trays, but has lacked specific guidelines for sizing conductors and using smaller conductors like PV wire and DG cable on rooftops. The 2023 update ...



Master NEC Article 392 with our comprehensive guide. Learn essential cable tray requirements for installation, grounding, and fill capacity to ensure full electrical compliance.



Cable tray length is selected based on the load to be supported, the distance between the supports (also referred to as the span), and handling and installation constraints.



Use this cable tray sizing calculator to check fill %, select tray size, and comply with IEC 61537 & NEC 392 with formulas, example and checklist.

Contact Us

For more information, pricing, or custom network solutions, please contact us:

Website: <https://www.hashherbcafe.co.za>

Email: hello@hashherbcafe.co.za

Phone: +27 63 814 7295

Address: 15 Galaxy Road, Linbro Business Park, Johannesburg, 2065, South Africa

This document is for informational purposes only. Specifications subject to change without notice.

