

## Ethiopia CE Certified Polarization-Maintaining Multimode Fiber Optic Cable



### Overview

This high-performance Polarization Maintaining (PM) Fiber Patch Cord is engineered for precision-critical optical systems. Using Panda-type PM fibers and carefully aligned connectors, it ensures stable signal integrity even under rigorous environmental changes. RP Photonics offers a lot of help: Get sufficiently informed about the technical background. RP Photonics supports you with unique content. Corning offers the broadest portfolio of PANDA PM fibers from wavelengths of 400-1550 nm and designs such as High NA and Flame Retardant coatings. The linear. Fiber optic cables are classified according to the propagation mode of light.

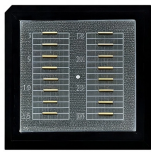
## Ethiopia CE Certified Polarization-Maintaining Multimode Fiber Opti



This polarization-maintaining fibers buying guide provides technical background, comparison of major types, selection criteria, and an overview of suppliers.



PM MPO patch cord is a kind of multi-core PM fiber that is fanned out and connected to MPO connector, it can transmit multiple polarization-maintaining optical signals and keep their polarization orientation ...



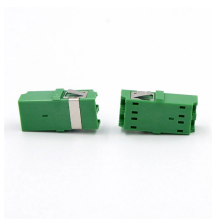
For use in the mid-IR spectral range, we offer single mode and multimode fluoride optical fiber manufactured in-house, as well as patch cables and other components incorporating our fluoride fiber.



These polarization-maintaining fiber optic patch cables are terminated on both ends with high-quality, narrow key, ceramic FC/PC connectors, featuring high-quality polish with a typical return loss of 50 dB.



PANDA Polarization Maintaining (PM) fibers are designed with high performance properties including excellent birefringence and low attenuation. Corning offers the broadest portfolio of PANDA PM fibers ...



This high-performance Polarization Maintaining (PM) Fiber Patch Cord is engineered for precision-critical optical systems. Using Panda-type PM fibers and carefully aligned connectors, it ...



The polarization-maintaining fiber cables made by Schäfter+ Kirchhoff typically use fibers of type PANDA. The slow axis is aligned with the index key of the FC type fiber connector with high precision ...



With qualified R& D facility and first-class technology, we provide users with international-standard approved fiber optic cables, as well as customized optical fiber solutions for global customers, ...



OZ Optics offers a broad range of polarization maintaining components, patchcords, and connectors designed to resolve polarization problems, which are becoming increasingly important in ...

## Contact Us

For more information, pricing, or custom network solutions, please contact us:

Website: <https://www.hashherbcafe.co.za>

Email: [hello@hashherbcafe.co.za](mailto:hello@hashherbcafe.co.za)

Phone: +27 63 814 7295

Address: 15 Galaxy Road, Linbro Business Park, Johannesburg, 2065, South Africa

This document is for informational purposes only. Specifications subject to change without notice.

