

Energy Internet Spanish Power Grid



Overview

Spain's electrical grid experienced instability and supply cuts weeks before the historic blackout that plunged the Iberian Peninsula into darkness. Experts warn about the system's fragility amid the energy transition. Metro stations were closed during the blackout. On Monday, 28 April 2025, at 12:33 CEST (11:33 WEST; 10:33 UTC), a major power blackout occurred across the Iberian Peninsula affecting mainland Portugal and peninsular Spain, where electric power was interrupted for about ten hours in most of the. U. Energy Secretary Chris Wright unpacks the fast track of gas and mineral projects on 'The Claman Countdown. ' Last Monday was a tough day for citizens of Spain and Portugal. What they. On April 22, 2025, Spain boasted of finally hitting its “first weekday of 100% renewable power” on its national grid.

Energy Internet Spanish Power Grid



On 28 April 2025, shortly after midday, the Iberian peninsula's electricity supply was shut down, causing widespread chaos, cutting internet and telephone connections and halting transport...



Spain's grid collapsed when solar power generation was high, triggering intense discussions around Spain's transition away from fossil fuelled power and, controversially, nuclear.



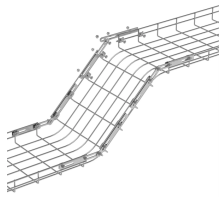
Aelec has analysed a global map published by Spanish grid operators and concluded that more than 80% of the Spanish grid's nodes cannot handle any increase in the volume of generated...



A major power outage in Spain and Portugal leaves residents without electricity, phones, and internet. Experts are investigating causes, including renewable energy transition and grid instability.



Spanish authorities say the massive power outage in April across Spain and Portugal was due to technical and planning errors that led to a ...



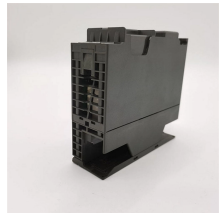
Spain's electrical grid experienced instability and supply cuts weeks before the historic blackout that plunged the Iberian Peninsula into darkness. Experts warn about the system's fragility ...



The Spanish electricity grid is saturated: the vast majority of connection nodes are full, and connecting new demand is becoming increasingly difficult. How does this situation impact ...



On Monday, 28 April 2025, at 12:33 CEST (11:33 WEST; 10:33 UTC), a major power blackout occurred across the Iberian Peninsula affecting mainland Portugal and peninsular Spain, where electric power ...



Spain's government declared a state of emergency and deployed an extra 30,000 police and military law enforcement officers to the streets. "The ...



Spain's government declared a state of emergency and deployed an extra 30,000 police and military law enforcement officers to the streets. "The electricity system was hit by a dramatic ...



Mere days later, the Spanish power grid inexplicably lost 60 percent of its generation capacity in mere seconds, taking the interconnected grids of Portugal and southern France down ...



Spanish authorities say the massive power outage in April across Spain and Portugal was due to technical and planning errors that led to a cascade of failures in the grid.



A major power outage in Spain and Portugal leaves residents without electricity, phones, and internet. Experts are investigating causes, including ...

Contact Us

For more information, pricing, or custom network solutions, please contact us:

Website: <https://www.hashherbcafe.co.za>

Email: hello@hashherbcafe.co.za

Phone: +27 63 814 7295

Address: 15 Galaxy Road, Linbro Business Park, Johannesburg, 2065, South Africa

This document is for informational purposes only. Specifications subject to change without notice.

