

Encapsulation Requirements for Communication Tower Foundations



Encapsulation Requirements for Communication Tower Foundations



The tower may support a variety of attachments, both directly and indirectly. The quantity and type of these appurtenances and their attachments or connections to the structure should be noted. The ...



Co-locate communications equipment on existing communication towers or other structures (e.g., billboard, water and transmission tower, distribution pole, or building mounts).



ASMTower performs foundation design for telecom structures for both Mat and Monopile foundations, following American and European standards.



Learn the key requirements for a telecom tower, including zoning regulations, safety approvals, structural standards, and compliance needed for tower construction.



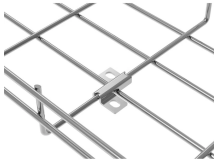
Depending upon the nature of soil, the types foundation of transmission towers should be selected and constructed accordingly. We have ...



This foundation selection criteria document has been prepared by the Engineering Specialties Group as a resource for public and private entities, who construct, own and manage communication ...



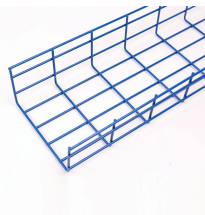
The independent foundation made of reinforced concrete belongs to the shallow foundation. It is necessary to ensure that the foundation has good bearing capacity, and the ...



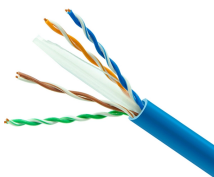
There are monopole towers, guyed towers, and lattice towers, each requiring a different unique foundation. This is not a one-size-fits-all task. Each design must be tailored with precision. ...



This specification establishes minimum standards for the design, fabrication and installation of latticed steel guyed and self-supporting towers including Portland Cement concrete foundations.



Depending upon the nature of soil, the types foundation of transmission towers should be selected and constructed accordingly. We have tried to give you a clear and brief Guidelines for ...



This case study focuses on the design of a telecom tower foundation using the engineering software program spMats. The tower under study is a 100 ft high and all members are hot-dip galvanized steel ...



By exploring key aspects such as foundation construction, tower erection, infrastructure installation, environmental considerations, and solutions to common challenges, this comprehensive ...



Here are six foundation types for communication towers that work for a wide range of situations and environments. If you're planning a new installation, knowing the basics of these foundations can help ...



According to the foundation design of two types of towers commonly used in the construction of communication base stations in Hebei China Unicom in recent years, the author ...

Contact Us

For more information, pricing, or custom network solutions, please contact us:

Website: <https://www.hashherbcafe.co.za>

Email: hello@hashherbcafe.co.za

Phone: +27 63 814 7295

Address: 15 Galaxy Road, Linbro Business Park, Johannesburg, 2065, South Africa

This document is for informational purposes only. Specifications subject to change without notice.

