




## ElectroGalvanized Cable Trays




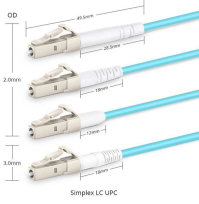
## ElectroGalvanized Cable Trays

	<p>The wire mesh cable tray designed by LongXing, includes indoor and outdoor use widely used in installation cable in different telecommunication houses, electricity units and engineering project.</p>
---	---

	<p>Ensure easy side cable routing with E-Line TLS trays, featuring a durable cage structure in stainless steel or galvanized options.</p>
---	---

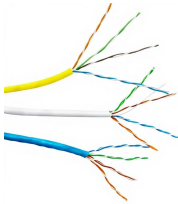
	<p>Heavy duty cable trays and cable ladders are manufactured from pre-galvanized, electro-galvanized, or hot-dipped galvanized sheet metal, designed to meet ideal environmental working conditions for ...</p>
---	---

	<p>The nVent CADDY Wire Basket Tray, Round Wire is a continuous pathway solution to support high-performance cabling systems while providing an ideal foundation for datacom and electrical contractors.</p>
---	--

	<p>Cable tray length is selected based on the load to be supported, the distance between the supports (also referred to as the span), and handling and installation constraints.</p>
---	--



Made of electro zinc-plated galvanized steel to help prevent corrosion from chemicals or humidity. Open design suspends electrical and network cables from support beams or routes them above drop ...



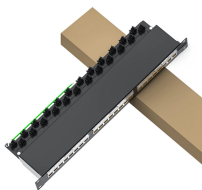
Explore an advanced dimension of cable organization with our Galvanized Cable Trays. Meticulously crafted for seamless cable routing and enhanced protection, these trays embody both robustness ...



Snap Track is An innovative channel tray system providing cable protection in a wide range of industries and applications A unique limited-width ventilated bottom channel tray, to be used as an alternative ...



WireRun ® Cable Trays can be installed either in a ceiling, in a raised floor or along a wall with brackets, and are easily altered to make turns to complete the path. Made of electro zinc-plated galvanized ...



Cable Tray and Cord Reels Precision engineered. Constructed from high-quality welded steel wire, Cablofil® Wire Mesh Cable Tray is the result of decades of research and over 94,000 miles of ...

## Contact Us

For more information, pricing, or custom network solutions, please contact us:

Website: <https://www.hashherbcafe.co.za>

Email: [hello@hashherbcafe.co.za](mailto:hello@hashherbcafe.co.za)

Phone: +27 63 814 7295

Address: 15 Galaxy Road, Linbro Business Park, Johannesburg, 2065, South Africa

This document is for informational purposes only. Specifications subject to change without notice.

