

Electricians Must Read Wiring Sequence for Distribution Boxes



Overview

Wiring Direction: Wiring between the main circuit breaker and each branch circuit breaker in the box generally goes on the left, and the wiring out of the distribution box generally goes on the right. Binding Requirements: The wires should be bound with plastic. Covers wiring, placement, standards, and expert tips for a compliant setup. A distribution box is the heart of any electrical system. It takes the incoming power and safely distributes it to different circuits throughout your building. Whether in a home or an industrial facility, this box keeps. The Neutral Bar collects the return wires. The intent of this manual is to clarify electric service requirements for Pacific Power and Rocky Mountain Power customers prior to and during construction. This manual may require different. In a typical home installation, the consumer unit (also called a distribution board) is the heart of the system: it distributes power to every circuit and, more importantly, it coordinates the protections that keep people, wiring and appliances safe. A conduit body is a removable-cover section of a conduit system that provides access at junctions or termination points. Article 314 applies to: These. Understanding the wiring diagram of an electrical panel box is essential for electricians and homeowners alike, as it allows them to

troubleshoot any electrical issues, carry out repairs, or make additions to the system. The electrical panel box wiring diagram provides a visual representation of.

Electricians Must Read Wiring Sequence for Distribution Boxes



Master breaker box labeling for safer electrical systems. Follow our expert step-by-step guide for efficient troubleshooting and maintenance.



Find out how to properly wire an electrical panel box with a comprehensive diagram and step-by-step instructions.



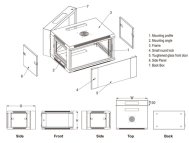
Master the safest and most efficient circuit breaker wiring configurations. Learn about single-phase vs. three-phase setups, safety standards, and future-proof electrical ...



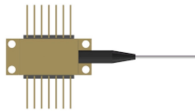
The intent of this manual is to clarify electric service requirements for Pacific Power and Rocky Mountain Power customers prior to and during construction. This manual may require different electrical ...



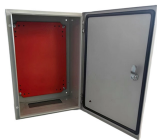
Learn how to read and understand wiring diagrams for breaker boxes to ensure proper electrical configurations and safety measures.



Wiring Direction: Wiring between the main circuit breaker and each branch circuit breaker in the box generally goes on the left, and the wiring out of the distribution box generally goes on the ...



The Company's filed Terms and Conditions require that all electrical facilities, wiring, and equipment furnished by the Customer be and remain in compliance with the National Electrical Code.



Complete guide to the home electrical panel: components, wiring diagrams, and regulations. Learn how to understand your fuse box.



NEC Article 314 establishes requirements for the installation and use of electrical boxes, conduit bodies, fittings, and handhole enclosures. A conduit body is a removable-cover section of a ...



Master the safest and most efficient circuit breaker wiring configurations. Learn about single-phase vs. three-phase setups, safety standards, and future-proof electrical planning.



Learn how to install a distribution box safely and correctly. Covers wiring, placement, standards, and expert tips for a compliant setup.

Contact Us

For more information, pricing, or custom network solutions, please contact us:

Website: <https://www.hashherbcafe.co.za>

Email: hello@hashherbcafe.co.za

Phone: +27 63 814 7295

Address: 15 Galaxy Road, Linbro Business Park, Johannesburg, 2065, South Africa

This document is for informational purposes only. Specifications subject to change without notice.

