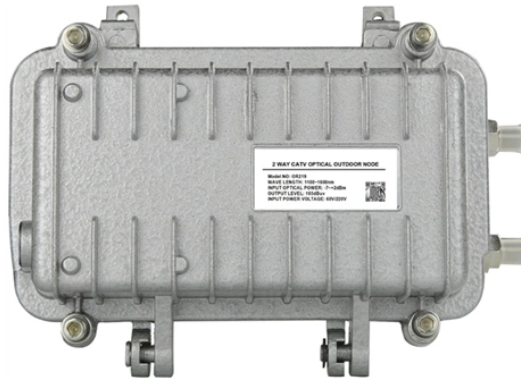


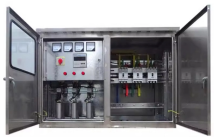
## Electrical distribution boxes in hazardous locations



## Electrical distribution boxes in hazardous locations



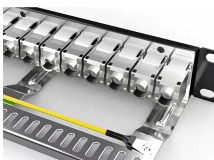
These boxes are designed to contain electrical components and wiring that may initiate a spark or an ignition. These types of enclosures are rain-tight, heavy-duty that are explosion-proof.



Whether you are designing a new facility, adding production capacity to an existing plant, or reconfiguring current equipment needs, we have the cable glands, connectors, and fittings that help ...



Find reliable power distribution blocks, units, and boxes for efficient electric power distribution. Hazquip offers durable solutions for industrial needs.



Learn about hazardous area electrical enclosures, enclosure types, material selection, IP/NEMA ratings, and compliance requirements for explosive environments.



Explosion-proof electrical distribution boxes are essential for safety in hazardous environments. These specialized enclosures are built to contain internal explosions and stop the ignition of flammable ...



Discover a complete guide to enclosures for hazardous locations—types, standards, and tips to ensure safety, compliance, and reliable performance in risky environments. Working in ...



Multi-Type Electrical Enclosures With options including wall-mount, free-stand, disconnect, junction boxes, wireways, HMI enclosures, and hazardous location models, Hoffman offers a full spectrum of ...



Choose from our selection of hazardous location electrical boxes, including outlet boxes and covers, weatherproof outlet boxes and covers, and more.



These enclosures install in locations where flammable gases, vapors, combustible dusts, and easily ignitable fibers or flyings are present. They can be used in petroleum refineries, chemical and ...



Learn everything about explosion proof enclosures for hazardous areas—design, certification, and industrial applications with ATEX, IECEx, and Class I Div compliance.

## Contact Us

For more information, pricing, or custom network solutions, please contact us:

Website: <https://www.hashherbcafe.co.za>

Email: [hello@hashherbcafe.co.za](mailto:hello@hashherbcafe.co.za)

Phone: +27 63 814 7295

Address: 15 Galaxy Road, Linbro Business Park, Johannesburg, 2065, South Africa

This document is for informational purposes only. Specifications subject to change without notice.

