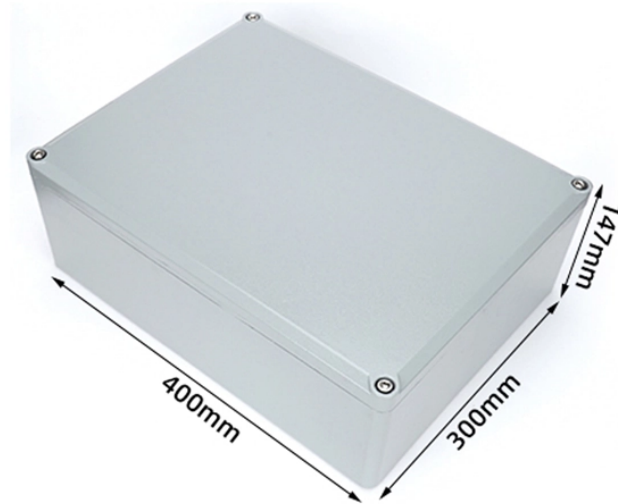


Electrical components for assembling the electrical box



Electrical components for assembling the electrical box



Explore the complete guide to electrical panels, including their components, functions, installation, maintenance, and how to recognize signs of overload or the need for replacement.



Complete guide to electronic box build assemblies, including meaning, process steps, benefits, and why it's essential in full system builds.



Electrical components are used to produce a complete box build assembly, which involves installing electronic parts and wiring them into a metal enclosure. NAI's box build manufacturing process uses ...



Understand the essential components of your electrical panel. This guide helps homeowners ensure safety and efficiency. Read more to empower your knowledge.



Learning about the different circuit breaker box parts provides helpful insight into how your electrical system works and how to troubleshoot potential issues. Key Parts of a Circuit Breaker Box



A detailed diagram of breaker box parts, explaining each component and its function for safe and proper electrical system installation and maintenance.



Inside an electrical enclosure, you'll find components like circuit breakers, DIN rails, bus bars, cable glands, vents, heaters, and accessories—each tailored for safety, mounting, and ...



In this guide, we've explored the essential components and functions of a distribution box, including how it distributes electricity, provides safety through circuit breakers and fuses, and ...



Discover the 8 essential accessories used with electrical boxes to improve safety, organization, and performance. ATEK Distribution delivers reliable, high-quality components.



Find out how to properly wire an electrical panel box with a comprehensive diagram and step-by-step instructions.

Contact Us

For more information, pricing, or custom network solutions, please contact us:

Website: <https://www.hashherbcafe.co.za>

Email: hello@hashherbcafe.co.za

Phone: +27 63 814 7295

Address: 15 Galaxy Road, Linbro Business Park, Johannesburg, 2065, South Africa

This document is for informational purposes only. Specifications subject to change without notice.

