

Electrical cable tray installation dimensions



Overview

Each cable tray type uses dimensions differently: Ladder trays prioritize width, side rail height, and thickness for heavy loads. Perforated trays balance containment with ventilation, reducing usable area. All illustrations, descriptions and technical information included in this document are provided as indications and can cable trays are equivalent. The mechanical and electrical characteristics, tests, certifications, overall quality management, recommendations mentioned. en completely installed, without damage either to conductors or structural system use maintain spacing or to keep cables in place when the tray is ect the minimum bend ra-dius for cables as they exit the bottom of the cable tray. A rung spacing of 6 to 9 inches (150 to 230 mm) is preferable when. Cable trays come in standardized dimensions based on international regulations like NEC (National Electrical Code) and IEC (International Electrotechnical Commission). Professional installations require careful analysis of cable types, voltage classifications, thermal considerations, and regulatory requirements.

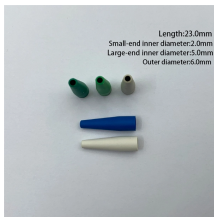
Electrical cable tray installation dimensions



Specifies requirements for metal cable trays and associated fittings designed for use in accordance with the rules of Canadian Electrical Code, Part I and the National Electrical Code®



MP Husky's cable tray selector for choosing the correct tray type (ladder, solid bottom, perforated, wire mesh) and size based on load, cable type and installation requirements.



Learn how to calculate the perfect cable tray size and dimensions for your electrical project. This guide covers load capacity, fill ratios, and industry standards.



Complete cable tray sizing guide with standard size chart, NEC calculation methods, and real engineering examples. Learn how to select the right cable tray dimensions for your project.



Selecting the appropriate electrical cable tray dimensions is a critical decision that directly impacts the safety, efficiency, and longevity of any industrial or commercial electrical installation. ...



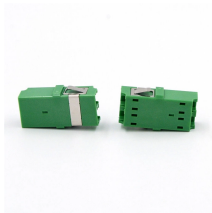
Cable tray length is selected based on the load to be supported, the distance between the supports (also referred to as the span), and handling and installation constraints.



Some applications may require the cable tray to support the weight of a single, dead object in addition to the cable loads. Specifications typically require this to be applied at the midpoint of the span between ...



Explore standard sizes by tray type, understand width and depth limits, and see how to calculate and choose compliant cable tray sizes for real projects.



Explore standard sizes by tray type, understand width and depth limits, and see how to calculate and choose compliant cable tray sizes for real projects.



Install expansion connectors where cable trays cross building expansion joints and in cable tray runs that exceed recommended dimensions. Space connectors and set gaps in accordance with ...



Use this cable tray sizing calculator to check fill %, select tray size, and comply with IEC 61537 & NEC 392 with formulas, example and checklist.

Contact Us

For more information, pricing, or custom network solutions, please contact us:

Website: <https://www.hashherbcafe.co.za>

Email: hello@hashherbcafe.co.za

Phone: +27 63 814 7295

Address: 15 Galaxy Road, Linbro Business Park, Johannesburg, 2065, South Africa

This document is for informational purposes only. Specifications subject to change without notice.

