

Electric Distribution Box Protective Net Equipment



Electric Distribution Box Protective Net Equipment



Make a one-time payment using one of the following payment methods: Need more time to pay? Explore our payment arrangement options tailored to fit your budget and schedule. SCE offers bill assistance ...



Log in today to experience improved access to your MVU account, payment options and electricity usage tracking. See how you can save money by purchasing energy-efficient devices.



This is the official website for the City of Moreno Valley, California. Copyright 1996 - 2026. All Rights Reserved. Important information about this site.



Moreno Valley Utility's (MVU) entire electric supply system is located underground in conduit and vaults. The undergrounding of electric lines serves as an effective mitigation measure to reduce the potential ...



Explore electrical utility enclosures for commercial and industrial use. NEMA-rated designs built for harsh outdoor and utility environments.



You can pay your bill in person at the MVU payment center located at: 14331 Frederick Street, Suite 2 Moreno Valley. 1.844.527.3053. 1.844.425.0855. The MyMVU mobile app is available for both Apple ...



This is the official website for the City of Moreno Valley, California. Copyright 1996 - 2026. All Rights Reserved. Important information about this site.



Discover electrical distribution equipment in modern power systems. Learn about types, functionality of distribution equipment in ensuring safe, reliable.



What Does a Distribution Box Do? A Distribution Box, commonly known as a DB Box, serves as the central point for safely distributing electrical power from a main supply to multiple downstream ...



Barry's dielectric nets are crafted from non-conductive materials designed to prevent electrical conductivity, making them ideal for use around energized equipment and power lines. These nets ...



DataComm Electrical Boxes Electrical Distribution Equipment Fasteners and Hardware Fittings Fuses Heating, Ventilation and Air Conditioning Industrial and Maintenance Supplies Industrial Control and ...



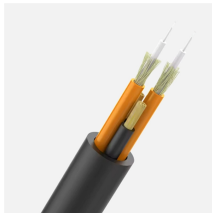
The Occupational Safety and Health Administration (OSHA) updated its Electric Power Generation, Transmission, and Distribution and its Electrical Protective Equipment standards, further ...



A substation generally contains transformers, protective equipment (relays and circuit breakers), switches for controlling high-voltage connections, distribution feeders, electronic instrumentation to ...



With an IP65 rating, this enclosure is fully dust-tight and protected against powerful water jets from any direction, making it ideal for outdoor and harsh industrial environments.



ELECTRIC definition: 1. using electricity for power: 2. relating to electricity: 3. very exciting and producing strong.... Learn more.



With an IP65 rating, this enclosure is fully dust-tight and protected against powerful water jets from any direction, making it ideal for outdoor and harsh industrial ...



Since 2001, the team at Omega Electric has been there for residential and commercial clients throughout Moreno Valley, California. Whether you need our help with your outlet installation or ...



Apply for one-time bill assistance from SCE. Why haven't I received a bill? Discover possible reasons why your bill hasn't arrived. Learn about the Base Services Charge and what it means for you. From ...



Discover electrical distribution equipment in modern power systems. Learn about types, functionality of distribution equipment in ensuring safe, reliable.



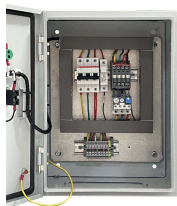
Electricity is the set of physical phenomena associated with the presence and motion of matter possessing an electric charge. Electricity is related to magnetism, both being part of the ...



ATEK Distribution supplies professional-grade electrical boxes for residential, commercial, industrial, and government projects nationwide. As a certified SDVOSB with 28+ years of experience, we carry ...



Secure your DIN rail equipment in sturdy, weatherproof enclosures. Explore a range of materials, sizes, and installation options to meet your electrical needs.



Type 1: Enclosures constructed for indoor use to provide a degree of protection to personnel against access to hazardous parts and to provide a degree of protection of the equipment inside the ingress ...

Contact Us

For more information, pricing, or custom network solutions, please contact us:

Website: <https://www.hashherbcafe.co.za>

Email: hello@hashherbcafe.co.za

Phone: +27 63 814 7295

Address: 15 Galaxy Road, Linbro Business Park, Johannesburg, 2065, South Africa

This document is for informational purposes only. Specifications subject to change without notice.

