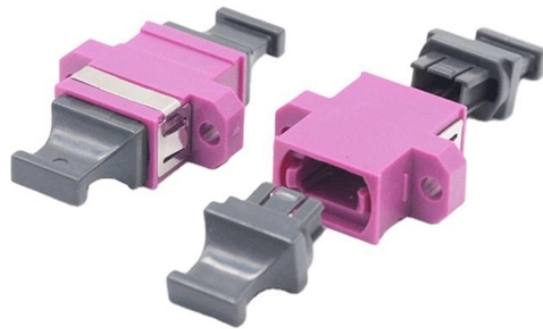


# **Eastern European Optical Cable Joint Protection Box**



## Eastern European Optical Cable Joint Protection Box



With the increasing digitization and requirement for high-speed networking, the ...



With the increasing digitization and requirement for high-speed networking, the Bartec Technor junction boxes for fiber optic signals performs dependably in the harshest of environments.



The XOK universal joint closures are designed to provide water and pressure tight environmental protection for optical fibres and optical fibre splices regardless of the cable design.



The fibre optic drop cable protection box is a case to put in a cable with a thermal protection tube after hot melting, so that the splice spot can get a better protection relative to the cold ...



CE-TEK Enclosures are designed and manufactured to the latest European standards and are available in a wide range of materials and sizes.



Our tailored boxes accommodate various fibre counts, seamlessly joining cables and microducts. Upgrade with our versatile joint closures and explore accessories like tool kits, protection sleeves, ...



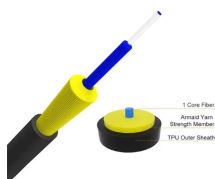
Advantages: various packages can be made according to customer requirements. Once receive your question, the supplier will answer you as soon as possible. Click here to contact the supplier through ...



The GR.TFO splice boxes in glass fiber reinforced IP66 polyester enclosures enable safe protection of fiber optic cable splices in hazardous areas. Each of these sturdy splice boxes can hold up to 8 ...



A Metal Joint Box from EPCOM provides an essential solution for protecting critical cable connections in modern electrical and telecommunication networks. Engineered for durability and long-term ...



Advantages: various packages can be made according to customer ...



The fibre optic drop cable protection box is a case to put in a cable ...



Designed to serve as a durable junction box enclosure, this fiber optic joint enclosure box is built from high-strength, UV-resistant, impact-resistant materials such as polypropylene or ABS plastic, ...



We offer bespoke, custom-made terminal boxes and terminal box combinations, as well as standard products with short delivery times. Our products are certified for installation technologies all over the ...

## Contact Us

For more information, pricing, or custom network solutions, please contact us:

Website: <https://www.hashherbcafe.co.za>

Email: [hello@hashherbcafe.co.za](mailto:hello@hashherbcafe.co.za)

Phone: +27 63 814 7295

Address: 15 Galaxy Road, Linbro Business Park, Johannesburg, 2065, South Africa

This document is for informational purposes only. Specifications subject to change without notice.

