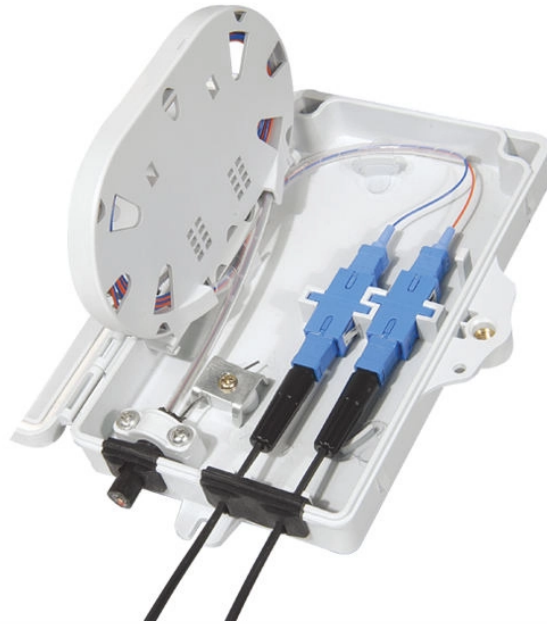


E2000 Connector Upgrade Version



E2000 Connector Upgrade Version



Lever Connector Compact Duplex Two E-2000 connectors can be joined together to make a duplex connector by using the COMPACT DUPLEX CLIP and the DUPLEX CONNECTOR LEVER.



This system is composed of a flange which provides an internal connection via a FC or Mini-AVIM style connector and a wide range of interchangeable adapters including the E-2000™, FC, SC, ST and ...



The E-2000® ETO connector is a sterilizable, non-magnetic fiber optic solution tailored for medical and MRI environments. Engineered with DIAMOND SA's signature precision, it offers exceptional optical ...



Yes, you will need a Compact Duplex Clip and need to replace the two Simplex Connector Levers with a Duplex Lever. The E-2000™ Connector offers a spring-loaded shutter mechanism that protects the ...



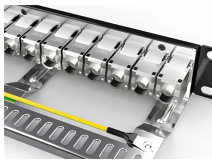
When mated, the PCB connector is retained in the mating adapter eliminating all the stress on the PC board. Existing components can be upgraded to the backplane version through the use of a simple ...



The E2000 Optical fiber connector provided by HYC can meet Telcordia GR 326 or IEC 61300-2; it is compliant with RoHS, IEC61754-15, IEC 61753-1 and other standards.



The E2000 fibre optic products offer both pre-loaded and fully modular systems to reduce installation time and maximize design flexibility for lower total system cost.



E2000 fiber optic connectors require specific fixturing and tooling. See our materials and equipment designed specifically for E2000 connector assemblies.



The connector is available for both singlemode and multimode applications. Variants: E-2000 /PC and E-2000 /APC. The E-2000 /APC connector has an oblique, polished ferrule front face (8°). APC ...



The E-2000™ connector is the most mechanically robust FO connector. Combined with R& M's quality requirements for raw materials, design, and workmanship, it guarantees the most stable transmission ...

Contact Us

For more information, pricing, or custom network solutions, please contact us:

Website: <https://www.hashherbcafe.co.za>

Email: hello@hashherbcafe.co.za

Phone: +27 63 814 7295

Address: 15 Galaxy Road, Linbro Business Park, Johannesburg, 2065, South Africa

This document is for informational purposes only. Specifications subject to change without notice.

