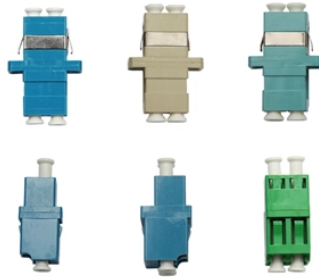


Double row of concealed distribution box



Double row of concealed distribution box



When the bottom box is embedded with concrete and poured on site, the bottom ...



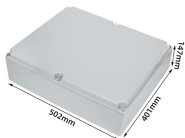
Wall Mounted Distribution box halogen-free, UV stabilized, 1500VDC, material ABS, including neutral conductor and grounding rails, cable entry at top 12xM20, 6xM25, 2xM32, 1xM40, at bottom 12xM20, ...



MAIN PURPOSE: 12 way circuit breaker box, mainly used to provide safety for your wall circuit, which is stable and EASY TO INSTALL: The distribution box with DIN rail, concealed mounting design, fast ...



High quality -24 Circuit (Ming fit) High quality -24 Circuit (concealed) The following Ming fit suit style 24 Ming case 1p leakage warranty 63 * 2 2p32 * 8 24 Ming box



PZ30 Series Concealed Double Row Household Distribution Box offers 12/24way, 250V, and customizable current. Ideal for simple, ash-colored, and durable solutions. | Alibaba



Nader NDP3A concealed distribution box series is applicable to indoor AC 50Hz or 60Hz, rated working voltage up to 440V, generally not exceeding 35 °C and occasionally reaching 60 °C.



welcome to taobao purchase double row double-row concealed distribution box, taobao hundreds of millions of hot selling goods, official logistics can be sent to the world, support foreign currency ...



Find reliable concealed distribution boxes with IP65 waterproofing, customizable sizes, and certified suppliers. Click to explore top-rated options for secure electrical installations.



Constructed with durable PC and cold-rolled steel, this concealed indoor distribution box provides leakage protection and is ideal for household use.



When the bottom box is embedded with concrete and poured on site, the bottom box needs to be supported up and down, left and right to prevent the bottom box from deformation.



Concealed Electrical Distribution Box, 30 Circuits, Double Row, Interior Lighting

Contact Us

For more information, pricing, or custom network solutions, please contact us:

Website: <https://www.hashherbcafe.co.za>

Email: hello@hashherbcafe.co.za

Phone: +27 63 814 7295

Address: 15 Galaxy Road, Linbro Business Park, Johannesburg, 2065, South Africa

This document is for informational purposes only. Specifications subject to change without notice.

