

Double-cable clamping method in distribution boxes



Overview

This is usually accomplished by installation of an NM-connector at the knockout that is secured to the box from both sides and clamps down on the cable. Most NM-connectors are approved for securing only one or two cables, but there are connectors listed to handle even more. Looking for product documentation?

Access product catalogues. The National Electrical Manufacturers Association (NEMA) Standards and guideline publications, of which the document herein is one, are developed through a voluntary Standards development process. This process brings together volunteers and/or seeks out the views of persons who have an interest in. The invention discloses a distribution box with a cable clamping mechanism, which comprises a display box, wherein the bottom end of the display box is fixedly connected with an opening and closing mechanism which is in the same vertical plane with the side wall of the display box and is in a. Today, we're diving deep into the world of distribution box grounding, breaking down the standards, and shining a light on those sneaky mistakes that even experienced electricians sometimes make. In case

of high power use, to meet the demand of current. And in order for the current to be carried at the demanded high powers to be met, the method of parallel. Double Clamp Bracket is a triple conductor midspan bracket used on distribution line.

Double-cable clamping method in distribution boxes



Today, we're diving deep into the world of distribution box grounding, breaking down the standards, and shining a light on those sneaky mistakes that even experienced electricians sometimes make.



The invention aims to provide a distribution box with a cable clamping mechanism, which is used for solving the problem that the cable clamping operation cannot be carried out in the...



Ensuring that the balanced current goes through all cables is possible by the right phase sequence and the correct arrangement of the cables, given the magnetic ...



Ensuring that the balanced current goes through all cables is possible by the right phase sequence and the correct arrangement of the cables, given the magnetic field interaction and impedances between ...



PURPOSE: This bulletin provides a basic design guide and a reference tool for designing rural substations. **GENERAL:** This Bulletin has been revised to bring the publication up to date with latest ...



BY DATE PROJECT DETAILS OF LINK
DISCONNECTOR FOR 63/100/200/315 KVA
DISTRIBUTION BOX



All hooks, eyes, pins, bolts, suspension clamps and other fittings for attaching to the tower or to the line conductor or to the earth wire shall be so designed that the effects of vibration, both on the conductor ...



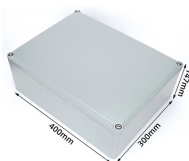
Double Clamp Bracket is a triple conductor midspan bracket used on distribution line. It helps to connect the wire to the pole. Conductor space 12 in.






Hope this helps answer any of those questions on the use of Metal-Clad Cable in Residential installations as well as the use of both nonmetallic boxes and metallic ...



This guide covers cable ladder systems, cable tray systems, channel support systems and associated supports intended for the support and accommodation of cables and possibly other electrical ...



SOCOMEK power cable clamps ensure the connection of copper or aluminium cables onto power terminals or busbars. These tinned clamps provide increased mechanical strength and high ...

	<p>To install this type of clamp, insert the threaded end into a knockout hole in the box, then thread on the locknut onto the threaded end from inside the ...</p>
	<p>Attaching a channel cable tray by using the method illustrated in Figure 3-88 maintains the electrical requirements, and the bolted mechanical connection while providing a practical method for dropping ...</p>
	<p>In this type of cable installation, the selected messenger is installed and the insulated cable is pulled along the messenger on rollers and attached to the messenger using spinning wire or other means ...</p>

Contact Us

For more information, pricing, or custom network solutions, please contact us:

Website: <https://www.hashherbcafe.co.za>

Email: hello@hashherbcafe.co.za

Phone: +27 63 814 7295

Address: 15 Galaxy Road, Linbro Business Park, Johannesburg, 2065, South Africa

This document is for informational purposes only. Specifications subject to change without notice.

