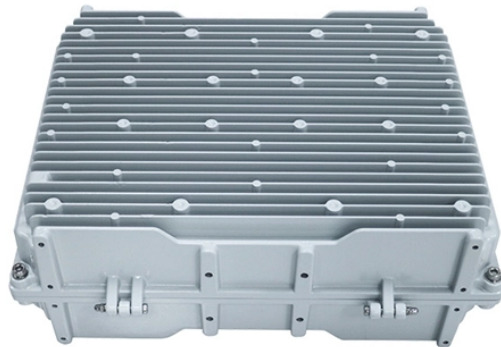



## Does the fiber optic patch cord connector emit a red light





### Overview


It sends a visible red light (typically around 650 nm wavelength) through the fiber optic cable. This light will shine through the fiber, illuminating any faults like breaks, severe bends, or poor splices that are disrupting the signal. Visual Fault Locator (VFL) testing is one of the most fundamental inspection methods used in FTTH, ODN, and data center environments. Fail: A bright red spot is visible at the breakpoint (the. The OptiFiber® Pro OTDR module and the CertiFiber Pro™ OLTS modules include a visual fault locator that sends a red light down the fiber. A VFL is used to detect faults, breaks, or bends in fiber optic cables by emitting a bright red light that is visible even through the fiber's jacket.


## Does the fiber optic patch cord connector emit a red light

	<p>DOES definition: a plural of doe. See examples of does used in a sentence.</p>
---	---

	<p>VFLs emit a highly visible red laser, which highlights any breaks, bends, or faults in the fiber cable through light leakage. This method detects issues in the fibers visually and can be an ...</p>
---	--

	<p>Pass: Red light is evenly transmitted (no dark spots or flickering). Fail: A bright red spot is visible at the breakpoint (the location of the fiber core break).</p>
---	--

	<p>Learn how to use do and does with simple rules, clear examples, and real sentence practice for questions and negatives.</p>
---	--

	<p>Discover when to use do and does in English grammar. Learn the rules for questions and negatives, see clear examples, and practice with easy exercises to master correct usage.</p>
---	--



A damaged fiber inside a connector causes a red light in the connector. Increase the quality of mechanical splices and prepolished connectors: Before you seal the splice or connector, adjust the ...



For residential applications, the light is an LED being emitted through a plastic fiber-optic cable. It's as harmless to look at as the red LED indicator lights present on almost all electronics.



Examples of "does" in a sentence does These examples have been automatically selected and may contain sensitive content that does not reflect the opinions or policies of Collins, or its parent ...



Stop guessing between do vs. does! Learn the easy rules for questions, negatives, and emphasis with our 10-second subject-verb chart.



Visual Fault Locator (VFL) testing is one of the most fundamental inspection methods used in FTTH, ODN, and data center environments. A VFL emits a visible red laser (typically 650 ...



We've put together a guide to help you use do, does, and did as action and auxiliary verbs in the simple past and present tenses.



Definition of does verb in Oxford Advanced Learner's Dictionary. Meaning, pronunciation, picture, example sentences, grammar, usage notes, synonyms and more.



Both do and does are present tense forms of the verb do. Which is the correct form to use depends on the subject of your sentence. In this article, we'll explain the difference between do ...



The meaning of DOES is present tense third-person singular of do; plural of doe.



DOES meaning: 1. he/she/it form of do 2. he/she/it form of do 3. present simple of do, used with he/she/it. Learn more.



Connecting the fiber optic patch cord cable and emitting red light: After cleaning the fiber patch cable endface, insert one end into the red light pen connector (such as LC or SC) to ensure a ...



It sends a visible red light (typically around 650 nm wavelength) through the fiber optic cable. This light will shine through the fiber, illuminating any faults like breaks, severe bends, or poor ...



A visual fault locator can quickly illuminate fiber breaks, damaged connectors on patch cords, defective splices in splice trays, and tight fiber bends in and around equipment racks.

## Contact Us

For more information, pricing, or custom network solutions, please contact us:

Website: <https://www.hashherbcafe.co.za>

Email: [hello@hashherbcafe.co.za](mailto:hello@hashherbcafe.co.za)

Phone: +27 63 814 7295

Address: 15 Galaxy Road, Linbro Business Park, Johannesburg, 2065, South Africa

This document is for informational purposes only. Specifications subject to change without notice.

