

Does the cable tray need to be secured when placed on the support



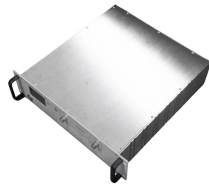
Overview

Avoid placing connectors in the center points of spans between supports or directly on supports. Cable trays should be fastened to the support system using guides that allow for longitudinal movement. Article Summary: A compliant cable tray installation requires a thorough understanding of NEC Article 392, proper structural support, and precise installation techniques. This guide covers the critical steps, from selecting the right electrical cable tray and performing accurate cable fill. A cable tray is a support structure that seems to be a bridge that supports wires in the air. 10 (B) (1), the smallest size single conductor allowed to be installed in a cable tray is.

Does the cable tray need to be secured when placed on the support



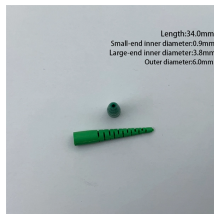
Cable trays must be adequately supported to carry the weight of cables plus any additional loads (such as snow or ice for outdoor installations). Use supports (wall brackets, trapeze ...



Cables and conductors must be secured to the cable tray at intervals according to installation instructions. For non-horizontal runs, cables should be fastened securely to transverse ...



All metallic cable trays must be grounded as outlined in NEC Article 250.96, even if the tray isn't being used as an equipment grounding conductor (EGC). This precaution helps prevent ...



This guide covers the critical steps, from selecting the right electrical cable tray and performing accurate cable fill calculations to managing a safe cable pull through and ensuring all bonding and grounding ...



Answer: The NEC does not have a specific installation clearance, but indicates in section 318-6 (b) that cable trays should be exposed and accessible. Telecommunications standard TIA/EIA-569 ...



Cable Tray Systems MAN-39 Cable Tray Manual
The Gap Another item essential to the operation of the cable tray expansion splices is the type of hold down clamps used. The cable tray must not be ...



The short answer is no. Due to their exposure to the open air because of the cable trays, the wires contained within need a very durable outer covering. The regulations dictate that the cables ...



Avoid placing connectors in the center points of spans between supports or directly on supports. Cable trays should be fastened to the support system using guides that allow for longitudinal movement.



All metal cable trays must be grounded and bonded per NEC Article 250. This ensures that if a fault occurs, the tray can safely conduct the current to ground, tripping the breaker and ...



Once the cable is installed in an open cable tray installation, take care to protect the exposed cables from falling objects or debris that could cause damage to the cable. In areas where the cable tray ...

Contact Us

For more information, pricing, or custom network solutions, please contact us:

Website: <https://www.hashherbcafe.co.za>

Email: hello@hashherbcafe.co.za

Phone: +27 63 814 7295

Address: 15 Galaxy Road, Linbro Business Park, Johannesburg, 2065, South Africa

This document is for informational purposes only. Specifications subject to change without notice.

