

Does fiber optic cable need an outer sheath Price



Does fiber optic cable need an outer sheath Price



Explore the importance of fiber optic cable jackets and their role in protecting delicate fibers for high-speed data transmission. Learn about various jacket materials like PVC, PE, TPE, and ...



Cablewholesale 6 Fiber ...Indoor/Outdoor Fiber Optic Cable, Multimode, 62.5/125 Micron, Black, Riser Rated, Spool, 1000 Feet\$629.48



Armored fiber optic cable and double sheath fiber optic cable are often confused, but they solve different engineering problems. Armored cable is primarily about resistance to crush, impact, ...



When comparing fiber optics cables, there are a lot of different components and considerations. One important component is the outer jacket of the cable. Outer jackets can be made from a number of ...



This guide breaks down the five core components of a fiber optic cable — from the specification package to the actual installation considerations. You will also learn how different ...



In FTTH and FTTx networks, cable sheath material is often treated as a secondary specification. Many procurement decisions focus on fiber count, connector type, or price, while the ...



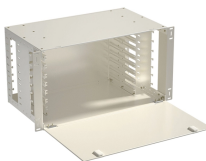
After the PSP is longitudinally applied over the inner sheath, the cable is completed with a PE outer sheath.



PVC is the most widely used fiber optic cable outer sheath material. It has good performances, good chemical resistance and weathering resistance, low cost, low flammability, and ...



Main cost drivers include cable grade (indoor vs outdoor, armoured), distance, and labor for trenching, splicing, and termination. This guide presents ranges in USD and practical price ...



Discover the cost of fiber optic cable in this pricing guide. Learn material prices, installation factors, and what impacts total project costs overall.



Choosing the appropriate outer sheath material for fiber optic cables is crucial for ensuring the cable's durability, protection, and performance under specific environmental conditions.

Contact Us

For more information, pricing, or custom network solutions, please contact us:

Website: <https://www.hashherbcafe.co.za>

Email: hello@hashherbcafe.co.za

Phone: +27 63 814 7295

Address: 15 Galaxy Road, Linbro Business Park, Johannesburg, 2065, South Africa

This document is for informational purposes only. Specifications subject to change without notice.

