

Does a low-voltage distribution box need to be grounded



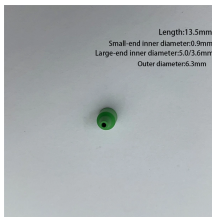
Does a low-voltage distribution box need to be grounded



Ensure good grounding and earthing practices to protect people and equipment from electrical faults. Regularly inspect and maintain your distribution ...



You can avoid this problem by measuring the line to line voltage (240 volts) at your panel (instead of line to ground). If you measure line to line, you'll do fine.



Correct grounding of services depends upon understanding the definition and role of the grounded conductor. The neutral conductor is typically the grounded conductor connected to the system's ...



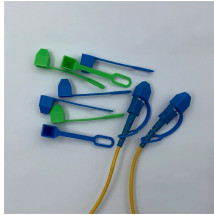
The manufacturer of low-voltage distribution box indicates that this is called the zero connection protection system. TN-C power supply system uses the working zero line as the zero connection ...



The CMEN system is the preferred method by which to earth distribution network, however, should only be employed in areas where there is an abundance of low-voltage ...



Ensure good grounding and earthing practices to protect people and equipment from electrical faults. Regularly inspect and maintain your distribution box to catch issues early and ensure ...



It depends on what the "low voltage" is. Generally speaking, "low voltage" circuits don't have to be grounded, per 250.20 (A), but again, that's a very general answer.



Conductive materials enclosing electric conductors and equipment, or forming part of that equipment, are grounded to prevent a voltage above ground on the enclosure materials.



Since ground resistances are typically low and of the same magnitude, voltage of the order of $U_0/2$ is dangerous. Therefore, the part of the installation affected by the fault must be automatically ...



For low voltage (600 V and below) systems, this naturally-occurring current is typically 1 A or less. When one phase becomes grounded, additional current above the charging level will flow.



Your distribution box is mission control for electricity in any building. When grounding fails here, it's like having a spaceship without a heat shield—everything inside becomes vulnerable to surges, faults, ...

Contact Us

For more information, pricing, or custom network solutions, please contact us:

Website: <https://www.hashherbcafe.co.za>

Email: hello@hashherbcafe.co.za

Phone: +27 63 814 7295

Address: 15 Galaxy Road, Linbro Business Park, Johannesburg, 2065, South Africa

This document is for informational purposes only. Specifications subject to change without notice.

