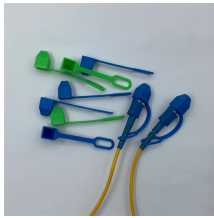


## Does a cable tray include a support structure Why



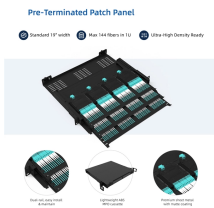
## Does a cable tray include a support structure Why



A cable tray is an organized support structure designed to secure and route these insulated electrical cables. It acts as a dedicated pathway for power distribution and data transmission, often supporting ...



Cable tray supports make it possible to achieve a higher level of cable management in terms of organization, safety, and productivity. Whether in an industrial setting, a data center, or an ...



A cable tray system is a unit assembly of sections and fittings that forms a rigid structural system used to securely fasten or support cables and wiring. Think of it as a sophisticated “highway” ...



Cable tray systems are engineered support structures designed to route, support, and protect insulated electrical cables used for power distribution, control, instrumentation, and ...



Learn how to avoid costly installation mistakes, like choosing the wrong cable tray type or overloading, and understand the critical engineering rigor required for cable tray supports.



One of the obvious advantages of fabricating cable tray support structures with Unistrut is that we can easily achieve custom dimensions due to the infinitely adjustable nature of our strut.



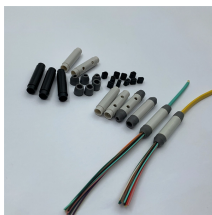
The main difference in a ladder tray versus ventilated trough installation lies in cable support and ventilation. Ladder trays offer superior ventilation and are easier for securing large cables.



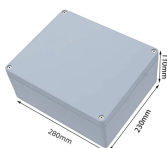
Cable tray is considered to be a system. It must provide continuous support for cables, and the electrical continuity of the cable tray system must be maintained.



A cable tray is a broader concept, referring to any support structure for laying electrical lines, whereas a cable ladder is specifically designed for laying cables.



A cable tray system is a unit assembly of sections and fittings that forms a rigid structural system used to securely fasten or support cables and ...



According to the National Electrical Code standard of the United States, a cable tray is a unit or assembly of units or sections and associated fittings forming a rigid structural system used to ...

## Contact Us

For more information, pricing, or custom network solutions, please contact us:

Website: <https://www.hashherbcafe.co.za>

Email: [hello@hashherbcafe.co.za](mailto:hello@hashherbcafe.co.za)

Phone: +27 63 814 7295

Address: 15 Galaxy Road, Linbro Business Park, Johannesburg, 2065, South Africa

This document is for informational purposes only. Specifications subject to change without notice.

